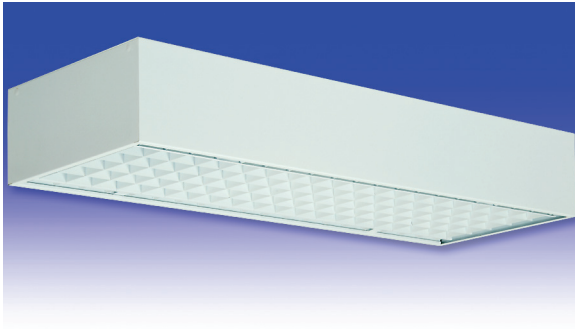


Y4 Series

FLUORESCENT | SURFACE 



GYM // LITE APPLICATIONS:

- UL/CUL Listed Dry Location
- Industrial & Commercial

BENEFITS:

- Square Cell Louver offers 33° x 33° shielding
- Luminaires adaptable to your specific needs

FEATURES:

- Premium electronic ballast standard
- Every luminaire tested with lamps to assure customer satisfaction
- 5 year limited warranty
- Proudly made in **USA**

SPECIFICATIONS:

HOUSING:

Constructed of nominal 18GA (.048) zinc coated steel for unmatched corrosion protection with ends welded into place. Welded, tapered, threaded flanges on the top provide a sealed wireway access. All seams are sealed with a long life acrylic sealant.

REFLECTOR:

Fabricated of zinc coated steel, painted with a minimum reflectance of 88%.

LIGHT CONTROL:

Square cell painted metal louver offers 33° x 33° shielding and is hinged for support during servicing.

FINISH:

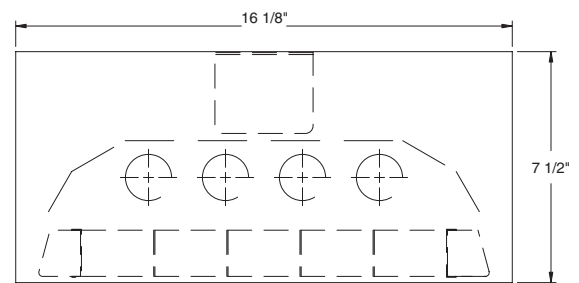
Painted surfaces are two mil of white polyester enamel, special colors are available.

ELECTRICAL:

All ballasts and lampholders are UL Listed.

MOUNTING:

Surface, pendant or custom detail available for covered ceiling installations.



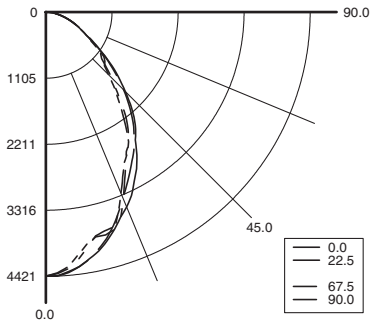
LENGTH	DIMENSIONS IN INCHES		
	A	B	C
4 FT	8 1/32	32	48 1/16
8 FT	16	64	96



Y4 Series



PHOTOMETRICS: For additional photometry, go to paramountlighting.com Model Y44320, 4FT, Specular Reflector and White Painted Multi-cell Louver, 4 32W T8 Fluorescent Lamps, Lamp Lumen Rating = 2950



Coefficients of Utilization, Zonal Cavity Method

Floor Cavity Reflectance: 20%

RC	.8				.7				.5				.3				.1				0
RW	.7	.5	.3	.1	.7	.5	.3	.1	.5	.3	.1	.5	.3	.1	.5	.3	.1	.5	.3	.1	0
R 0	78	78	78	78	76	76	76	76	73	73	73	70	70	70	67	67	67	65	65	65	65
C 1	72	70	67	65	71	68	66	64	65	63	62	63	61	60	60	59	58	57	57	57	57
R 2	67	62	58	55	65	61	57	54	58	55	53	56	54	52	54	52	50	49	49	49	49
3	61	55	51	47	60	54	50	46	52	49	46	51	47	45	49	46	44	44	44	44	44
4	57	50	45	41	55	49	44	40	47	43	40	46	42	39	44	41	39	38	38	38	38
5	53	45	40	36	51	44	39	36	43	39	35	42	38	35	41	37	35	33	33	33	33
6	49	41	36	32	48	40	35	32	39	35	31	38	34	31	37	34	31	30	30	30	30
7	46	38	32	29	45	37	32	29	36	32	28	35	31	28	34	31	28	27	27	27	27
8	43	35	29	26	42	34	29	26	33	29	26	33	28	26	32	28	25	24	24	24	24
9	40	32	27	24	39	32	27	24	31	27	23	30	26	23	30	26	23	22	22	22	22
10	38	30	25	22	37	29	25	22	29	24	21	28	24	21	28	24	21	20	20	20	20

Zonal Lumen Summary

Zone	Lumens	% Lamp	% Luminaire
0-30	2949	25	38.1
0-40	4474	37.9	57.8
0-60	6717	56.9	86.7
0-90	7745	65.6	100
90-120	0	0	0
90-130	0	0	0
90-150	0	0	0
90-180	0	0	0
0-180	7745	65.6	100

Total Luminaire Optical Efficiency = 65.6%
Spacing Criterion: 0° = 1.05, 90° = 0.95

GYM // LITE ORDERING INFORMATION:

Y4 SERIES	LAMP QTY	LAMP TYPE	0 LOUVER	OPTIONS	VOLTAGE
Y4 Dry Location	2 4		0 Louver	EMERGENCY (SPECIFY VOLTAGE) EM5 Bodine B70A DRY/IOTA I-48 DRY or similar EM6 Bodine B50 DRY/IOTA I-320 DRY or similar BALLASTS (SPECIFY VOLTAGE) D4 < 10% THD (Consult Factory) E2 2 Electronic Ballasts E4 4 Electronic Ballasts E9 Rapid Start Electronic Ballast FUSING F1 GLR/HLR Fusing (Fast) F2 GMF/HLR Fusing (Slow) MISC M1 Pendant Mount (Pendants By Others) M2 Mounting Bracket Kit (Surface / Chain) P9 Special Paint Color (Provide Paint Code & Chip) R5 Specular Aluminum Reflector W4 Inboard Outboard Wiring (Dual Switching)	120V-277V/60Hz STD 347V/60Hz 50Hz & Other Voltages Available
32 F32T8 (4FT) 0° 48H F48T12/HO (4FT) -20° 48T8H F48T8/HO(4FT) -20° 96H F96T12/HO (8FT) -20° 96T8 F96T8 (8FT) (59W) 50° 96T8H F96T8/HO (8FT) -20°					

Add hyphens between options

Other Wattages Available, Consult Factory.

Project Information:

Information subject to change without notice. Lamps supplied by others.

© 2010 Paramount Industries, Inc. P.O. Box 259 Crosswell, MI 48422