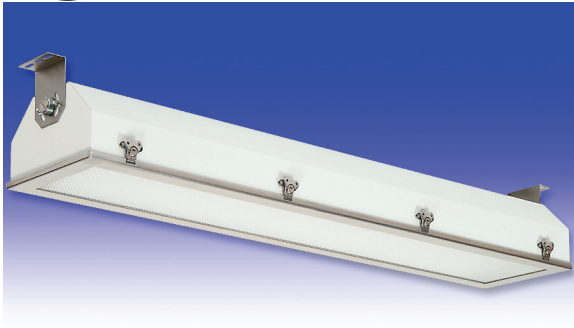


T6 Series

FLUORESCENT | SURFACE 



PARAMYD® APPLICATIONS:

- UL/CUL Listed Wet Location
- Industrial & Commercial
- Transit

BENEFITS:

- Tool-free lens frame
- Flexible mounting options
- Luminaires adaptable to your specific needs

FEATURES:

- Premium electronic ballast standard
- Available in stainless steel construction
- Every luminaire tested with lamps to assure customer satisfaction
- 5 year limited warranty
- Proudly made in **USA**

SPECIFICATIONS:

HOUSING:

Constructed of nominal 18GA (.048) zinc coated steel for unmatched corrosion protection. Two welded, tapered, threaded hubs on the ends provides a sealed wireway access. All seams are sealed with long life acrylic sealant.

REFLECTOR:

Fabricated of zinc coated steel, painted with a minimum reflectance of 88%.

LENS FRAME:

Uniquely designed frame is fabricated of nominal 16 GA (.063) stainless steel and incorporates "tool free" removal for easy servicing. Cam action latches hold the door tight to the housing and allow the luminaire to be opened from either side.

GASKETING:

Extruded EPDM used to seal the frame to the housing.

FINISH:

Painted surfaces are two mil white polyester enamel, special colors available.

LENS:

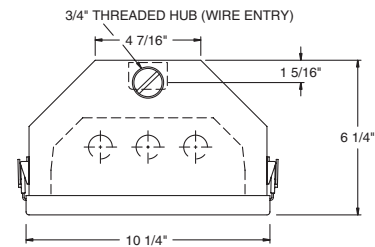
.140 extruded prismatic acrylic with 50% DR content for durability, smooth side out. Consult factory for other lens options.

ELECTRICAL:

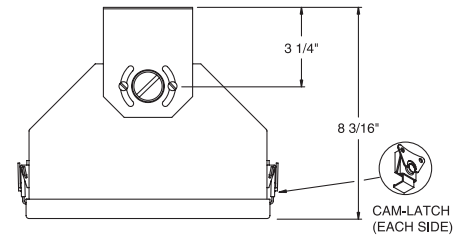
All ballasts and lampholders are UL Listed.

MOUNTING:

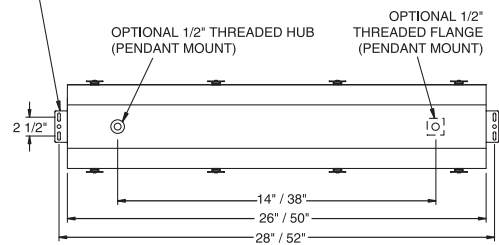
Surface, pendant or custom detail available for covered ceiling installations.



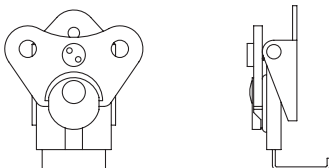
STD HOUSING AND MOUNTING BRACKET



STD: S.S. ADJUSTABLE MTG. BRKT. W/ 5/16\"/>



TAMPER-PROOF LATCH ASSEMBLY



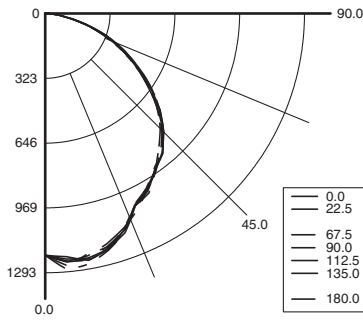


T6 Series



PHOTOMETRICS: For additional photometry, go to paramountlighting.com

Model T62326, 4FT, White Reflector and Clear Polycarbonate Lens, 2 32W T8 Fluorescent Lamps, Lamp Lumen Rating = 2950



Coefficients of Utilization, Zonal Cavity Method

Floor Cavity Reflectance: 20%

RC	.8				.7				.5				.3				.1				0	
RW	.7	.5	.3	.1	.7	.5	.3	.1	.5	.3	.1	.5	.3	.1	.5	.3	.1	.5	.3	.1	0	
R 0	70	70	70	70	68	68	68	68	65	65	65	62	62	62	60	60	60	58				
C 1	64	61	59	56	62	60	57	55	57	55	54	55	53	52	53	52	50	49				
R 2	58	53	49	46	56	52	48	45	50	47	44	48	46	43	46	44	42	41				
3	53	47	42	38	51	46	41	38	44	40	37	42	39	37	41	38	36	35				
4	48	41	36	32	47	41	36	32	39	35	32	38	34	31	37	33	31	30				
5	44	37	32	28	43	36	31	28	35	31	27	34	30	27	33	30	27	26				
6	41	33	28	24	40	33	28	24	32	27	24	31	27	24	30	26	24	22				
7	38	30	25	21	37	30	25	21	29	24	21	28	24	21	27	24	21	20				
8	35	28	23	19	35	27	22	19	26	22	19	26	22	19	25	21	19	18				
9	33	25	20	17	32	25	20	17	24	20	17	24	20	17	23	20	17	16				
10	31	23	19	16	30	23	19	16	22	18	16	22	18	15	21	18	15	14				

Zonal Lumen Summary

Zone	Lumens	% Lamp	% Luminaire
0-30	958	16	28
0-40	1556	26	45
0-60	2755	47	80
0-90	3440	58	100
90-120	1	0	0
90-150	1	0	0
90-180	1	0	0
0-180	3441	58	100

Total Luminaire Optical Efficiency = 58.3%

Spacing Criterion: 0° = 1.24, 90° = 1.25

PARAMYD® ORDERING INFORMATION:

SERIES	LAMP QTY	LAMP TYPE	LENS	OPT MATERIAL	OPTIONS	VOLTAGE
T6	Wet Location	2 3	2 .125 Clear Acrylic (No Pattern) 3 .125 White Acrylic 4 .140 Prismatic Acrylic (P12) (base) 6 .125 Clear Polycarbonate (No Pattern) 7 .125 White Polycarbonate 8 .156 Prismatic Polycarbonate (P12) 9 .187 Tempered Glass (P62)		EMERGENCY (4FT Only) (SPECIFY VOLTAGE) EM2 Bodine BDL700 WET/IOTA 1-48-DL WET or similar EM3 Bodine BDL500 WET/IOTA 1-320-DL WET or similar EM4 Bodine BDL900 WET/IOTA 1-40-DL WET or similar BALLASTS (SPECIFY VOLTAGE) D4 < 10% THD (Consult Factory) E0 Low-Temp Electronic (N/A T12 RS & VHO) E2 2 Electronic Ballasts E9 Rapid Start Electronic Ballast FUSING F1 GLR/HLR Fusing (Fast) F2 GMF/HLR Fusing (Slow) LENSING H5 .156 C73 Tempered Glass H6 .187 Clear Tempered Glass J0 Lamp Sleeves (Specify Color) J2 .060 Clear Acrylic Overlay J6 .080 Clear Polycarbonate Overlay K6 External Prisms MOUNTING M1 Pendant Mount (Pendants By Others) MISC P9 Special Paint Color (Provide Paint Code & Chip) R5 Specular Aluminum Reflector S1 Special Material (Consult Agent) T1 Stainless Steel Latches (Standard w/ -S3 Option) T3 Tamper Resistant Latches (Please Specify) V3 No Silicone Sealant Used W4 Inboard Outboard Wiring (Dual Switching) Y6 Flex-Loc® Lamp Holder (Med Bi-Pin Only: T8, T12)	120V-277V/60Hz STD 347V/60Hz 50Hz & Other Voltages Available
14T5	F14T5 (2FT)	0°				
17	F17T8 (2FT)	0°				
24T5H	F24T5/HO (2FT) 2L Only	0°				
25	F25T8 (3FT)	0°				
28T5	F28T5 (4FT)	0°				
32	F32T8 (4FT)	0°				
48H	F48T12/HO (4FT) 2L Only	-20°				
48T8H	F48T8/HO (4FT) 2L Only	-20°				
54T5H	F54T5/HO (4FT) 2L Only	0°				

*S3 Stainless Steel Exterior
* Note: If Stainless Steel is ordered, 304 SS Standard 316 SS and other materials available, consult agent.

Add hyphens between options

Project Information:

Information subject to change without notice. Lamps supplied by others.

© 2010 Paramount Industries, Inc. P.O. Box 259 Crosswell, MI 48422