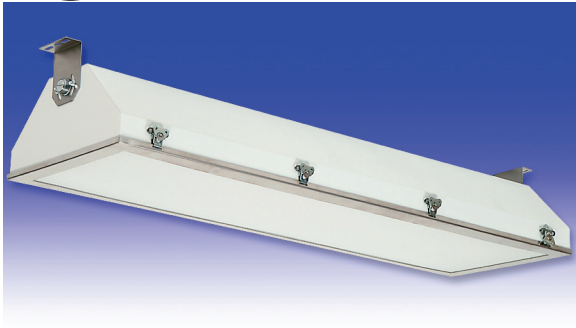


# T5 Series

**FLUORESCENT | SURFACE** 



**PARAMYD® APPLICATIONS:**

- UL/CUL Listed Wet Location
- UL/CUL Hazardous Location (Class I, Division 2; Groups A, B, C & D; Class II, Division 2; Groups F & G)
- Industrial & Commercial
- Transit

**BENEFITS:**

- Tool-free lens frame
- Flexible mounting systems
- Luminaires adaptable to your specific needs

**FEATURES:**

- Premium electronic ballast standard
- Available in stainless steel construction
- Every luminaire tested with lamps to assure customer satisfaction
- 5 year limited warranty
- Proudly made in **USA**

## SPECIFICATIONS:

**HOUSING:**

Constructed of nominal 18GA (.048) zinc coated steel for unmatched corrosion protection. Two welded, tapered, threaded hubs on the ends provides a sealed wireway access. All seams are sealed with long life acrylic sealant.

**REFLECTOR:**

Fabricated of zinc coated steel, painted with a minimum reflectance of 88%.

**LENS FRAME:**

Uniquely designed frame is fabricated of nominal 16 GA (.063) stainless steel and incorporates "tool free" removal for easy servicing. Cam action latches hold the door tight to the housing and allow the luminaire to be opened from either side.

**GASKETING:**

Extruded EPDM used to seal the frame to the housing.

**FINISH:**

Painted surfaces are two mil white polyester enamel, special colors available.

**LENS:**

.140 extruded prismatic acrylic with 50% DR content for durability, smooth side out. Consult factory for other lens options.

**ELECTRICAL:**

All ballasts and lampholders are UL Listed.

**MOUNTING:**

Surface, pendant or custom detail available for covered ceiling installations.

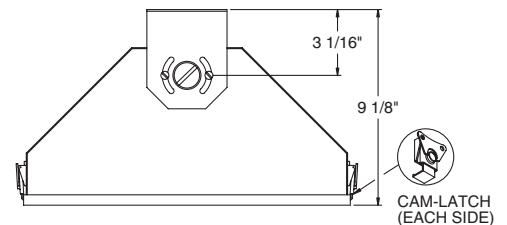
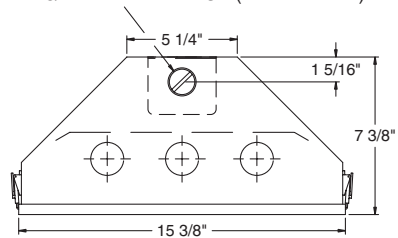
**TEMPERATURE CODE:**

Class I, Div. 2= T3 (160°C); Class II, Div. 2= T3 (160°C)

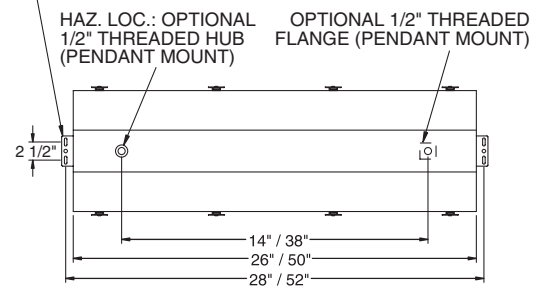
**HOSEDOWN TESTING:**

Water testing was done at the factory to simulate extreme hosedown conditions. The T5 allowed no water to enter after 5 minutes exposure to 85 gallons/minute from a 3/4" dia. nozzle.

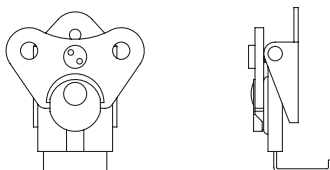
3/4" THREADED HUB (WIRE ENTRY)



STD: S.S. ADJUSTABLE MTG. BRKT. W/ 5/16" x 1" SLOTTED MTG. HOLES & 7/16" DIA. HOLE FOR STEM MOUNTING

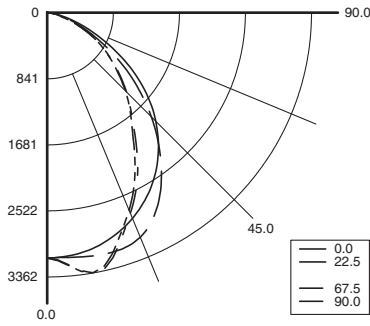


TAMPER-PROOF LATCH ASSEMBLY



**PHOTOMETRICS:** For additional photometry, go to [paramountlighting.com](http://paramountlighting.com)

Model T53329, 4FT, Specular Reflector and Tempered Glass Lens, 3 32W T8 Fluorescent Lamps, Lamp Lumen Rating = 3050



### Coefficients of Utilization, Zonal Cavity Method

Floor Cavity Reflectance: 20%

| RC  | .8 |    |    | .7 |    |    | .5 |    |    | .3 |    |    | .1 |    |    | 0  |    |    |
|-----|----|----|----|----|----|----|----|----|----|----|----|----|----|----|----|----|----|----|
| RW  | .7 | .5 | .3 | .7 | .5 | .3 | .5 | .3 | .1 | .5 | .3 | .1 | .5 | .3 | .1 | 0  |    |    |
| R 0 | 90 | 90 | 90 | 87 | 87 | 87 | 87 | 84 | 84 | 84 | 80 | 80 | 80 | 77 | 77 | 77 | 75 |    |
| C 1 | 83 | 80 | 77 | 75 | 81 | 78 | 76 | 74 | 75 | 73 | 71 | 72 | 71 | 69 | 70 | 68 | 67 | 66 |
| R 2 | 77 | 71 | 67 | 63 | 75 | 70 | 66 | 62 | 67 | 64 | 61 | 65 | 62 | 59 | 63 | 60 | 58 | 57 |
| 3   | 71 | 63 | 58 | 54 | 69 | 62 | 57 | 53 | 60 | 56 | 52 | 58 | 54 | 51 | 56 | 53 | 51 | 49 |
| 4   | 65 | 57 | 51 | 46 | 63 | 56 | 50 | 46 | 54 | 49 | 45 | 52 | 48 | 45 | 51 | 47 | 44 | 43 |
| 5   | 60 | 51 | 45 | 41 | 59 | 51 | 45 | 40 | 49 | 44 | 40 | 48 | 43 | 40 | 46 | 42 | 39 | 38 |
| 6   | 56 | 47 | 40 | 36 | 54 | 46 | 40 | 36 | 45 | 39 | 35 | 43 | 39 | 35 | 42 | 38 | 35 | 33 |
| 7   | 52 | 43 | 36 | 32 | 51 | 42 | 36 | 32 | 41 | 36 | 32 | 40 | 35 | 32 | 39 | 35 | 31 | 30 |
| 8   | 49 | 39 | 33 | 29 | 47 | 38 | 33 | 29 | 38 | 32 | 29 | 37 | 32 | 28 | 36 | 31 | 28 | 27 |
| 9   | 45 | 36 | 30 | 26 | 44 | 35 | 30 | 26 | 35 | 30 | 26 | 34 | 29 | 26 | 33 | 29 | 26 | 24 |
| 10  | 43 | 33 | 28 | 24 | 42 | 33 | 27 | 24 | 32 | 27 | 24 | 31 | 27 | 24 | 31 | 27 | 24 | 22 |

### Zonal Lumen Summary

| Zone   | Lumens | % Lamp | % Luminaire |
|--------|--------|--------|-------------|
| 0-30   | 2473   | 27     | 35.8        |
| 0-40   | 3852   | 42.1   | 55.7        |
| 0-60   | 6070   | 66.3   | 87.8        |
| 0-90   | 6911   | 75.5   | 100         |
| 90-120 | 0      | 0      | 0           |
| 90-130 | 0      | 0      | 0           |
| 90-150 | 0      | 0      | 0           |
| 90-180 | 0      | 0      | 0           |
| 0-180  | 6911   | 75.5   | 100         |

Total Luminaire Optical Efficiency = 75.5%  
Spacing Criterion: 0° = 1.24, 90° = 1.09

## PARAMYD® ORDERING INFORMATION:

| SERIES          | LAMP QTY    | LAMP TYPE | LENS                                    | OPT MATERIAL | OPTIONS  | VOLTAGE                         |
|-----------------|-------------|-----------|---|--------------|--|---------------------------------|
| T5 Wet Location | 2*          |           | 2 .125 Clear Acrylic (No Pattern)       |              | <b>EMERGENCY</b> (4FT Only) (SPECIFY VOLTAGE)              | 120V-277V/60Hz                  |
| HT5* Hazardous  | 3* Standard |           | 3 .125 White Acrylic                    |              | <b>EM2</b> Bodine BDL700 WET/IOTA I-48-DL WET or similar   | 347V/60Hz                       |
|                 |             |           | 4 .140 Prismatic Acrylic (P12) (base)   |              | <b>EM3</b> Bodine BDL500 WET/IOTA I-320-DL WET or similar  | 50Hz & Other Voltages Available |
|                 |             |           | 6 .125 Clear Polycarbonate (No Pattern) |              | <b>EM4</b> Bodine BDL900 WET/IOTA I-40-DL WET or similar   |                                 |
|                 |             |           | 7 .125 White Polycarbonate              |              | <b>EM8</b> Bodine BHD65U HAZ. LOC.                         |                                 |
|                 |             |           | 8 .156 Prismatic Polycarbonate (P12)    |              | <b>BALLASTS</b> (SPECIFY VOLTAGE)                          |                                 |
|                 |             |           | 9 .187 Tempered Glass (P62)             |              | <b>D4</b> < 10% THD (Consult Factory)                      |                                 |
|                 |             |           |   |              | <b>E0</b> Low-Temp Electronic (N/A T12 RS & VHO)           |                                 |
|                 |             |           |   |              | <b>E2</b> 2 Electronic Ballasts                            |                                 |
|                 |             |           |   |              | <b>E3</b> 3 Electronic Ballasts                            |                                 |
|                 |             |           |   |              | <b>E9</b> Rapid Start Electronic Ballast                   |                                 |
|                 |             |           |   |              | <b>FUSING</b>  |                                 |
|                 |             |           |   |              | <b>F1</b> GLR/HLR Fusing (Fast)                            |                                 |
|                 |             |           |   |              | <b>F2</b> GMF/HLR Fusing (Slow)                            |                                 |
|                 |             |           |   |              | <b>LENSING</b>   |                                 |
|                 |             |           |   |              | <b>H5</b> .156 C73 Tempered Glass                          |                                 |
|                 |             |           |   |              | <b>H6</b> .187 Clear Tempered Glass                        |                                 |
|                 |             |           |   |              | <b>J0</b> Lamp Sleeves (Specify Color)                     |                                 |
|                 |             |           |   |              | <b>J2</b> .060 Clear Acrylic Overlay                       |                                 |
|                 |             |           |   |              | <b>J6</b> .080 Clear Polycarbonate Overlay                 |                                 |
|                 |             |           |   |              | <b>K6</b> External Prisms                                  |                                 |
|                 |             |           |   |              | <b>MOUNTING</b>  |                                 |
|                 |             |           |   |              | <b>M1</b> Pendant Mount (Pendants By Others)               |                                 |
|                 |             |           |   |              | <b>MISC</b>  |                                 |
|                 |             |           |   |              | <b>P9</b> Special Paint Color (Provide Paint Code & Chip)  |                                 |
|                 |             |           |   |              | <b>R5</b> Specular Aluminum Reflector                      |                                 |
|                 |             |           |   |              | <b>S1</b> Special Material (Consult Agent)                 |                                 |
|                 |             |           |   |              | <b>T1</b> Stainless Steel Latches (Standard w/ -S3 Option) |                                 |
|                 |             |           |   |              | <b>T3</b> Tamper Resistant Latches (Please Specify)        |                                 |
|                 |             |           |   |              | <b>V3</b> No Silicone Sealant Used                         |                                 |
|                 |             |           |   |              | <b>W4</b> Inboard Outboard Wiring (Dual Switching)         |                                 |
|                 |             |           |   |              | <b>Y1</b> Nite Lite (Consult Agent)                        |                                 |
|                 |             |           |   |              | <b>Y6</b> Flex-Loc® Lamp Holder (Med Bi-Pin Only: T8, T12) |                                 |

\*Lamp Type Available for Hazardous Location.

\*S3 Stainless Steel Exterior

\*Note: If Stainless Steel is ordered, 304 SS Standard 316 SS and other materials available, consult agent.

Add hyphens between options

Other Wattages Available, Consult Factory.

**Project Information:**