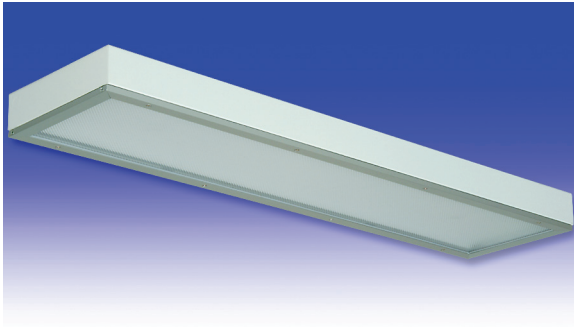




S3 Series

FLUORESCENT | SURFACE **S**



1x TECHNISEAL® APPLICATIONS:

- UL/CUL Listed Damp Location
- Cleanroom (Classes 100-100,000; ISO Classes 5-9)
- NSF Certified Food Processing (Splash Zone, Food Zone)
- Industrial & Commercial
- Transit

BENEFITS:

- Unique low profile design
- Luminaires adaptable to your specific needs

FEATURES:

- Available with **IP 65 rating**, add -IP65 suffix (requires stainless steel lens frame)
- Premium electronic ballast standard
- Available in stainless steel construction
- Every luminaire tested with lamps to assure customer satisfaction
- 5 year limited warranty
- Proudly made in **USA**

SPECIFICATIONS:

HOUSING:

Constructed of nominal 20GA (.036) zinc coated steel for unmatched corrosion protection. Knockouts on the ends and back of the luminaire provide wireway access. All seams are sealed with a long life acrylic sealant.

Splash and Food Zone: Welded, tapered, threaded flanges on the back provide a sealed wireway.

Food Zone: All external metal components of stainless steel (S3 option std).

REFLECTOR:

Fabricated of zinc coated steel, painted with a minimum reflectance of 88%.

LENS FRAME:

Exclusively designed, heavy duty, extruded, anodized aluminum with stainless steel captive screws used to hold the lens frame tight to the housing. The frame is supported by two cables while servicing.

Food Zone: All external metal components of stainless steel (S3 option std).

GASKETING:

An extruded, ribbed vinyl gasket seals the lens into the frame; with our exclusive, mechanically held, extruded, silicone gasket used to seal the frame to the housing.

Food Zone: Silicone sealant is used to seal the lens into the frame, with EPDM sealing the frame to the housing.

FINISH:

Painted surfaces are two mil white polyester enamel, special colors available.

LENS:

.140 extruded prismatic acrylic with 50% DR content for durability, smooth side out.

Food Zone: .156 extruded prismatic polycarbonate, smooth side out.

ELECTRICAL:

All ballasts and lampholders are UL Listed.

MOUNTING:

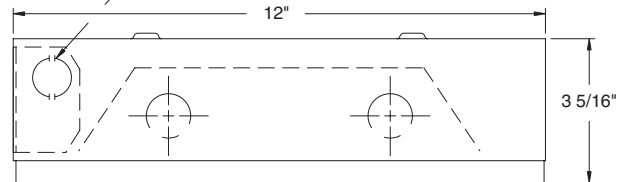
Surface or custom detail available for covered ceiling installations.

STD:

1/2" KNOCK OUT EACH END (WIRE ENTRY)

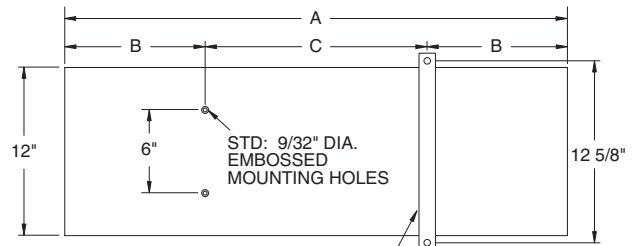
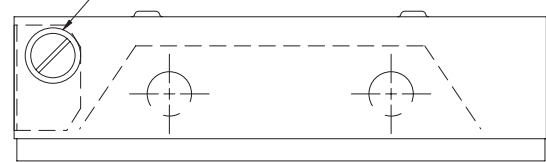
OPTIONAL:

1/2" THREADED FLANGE EACH END (WIRE ENTRY)



SS3, FS3:

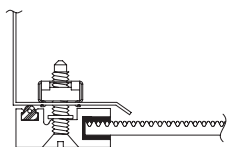
1/2" THREADED HUB (WIRE ENTRY)



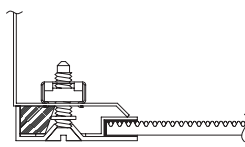
OPTIONAL MOUNTING STRAP W/ 5/16" DIA. MTG. HOLES

LENGTH	DIMENSIONS IN INCHES		
	A	B	C
2 FT	24 1/2	4 1/4	16
3 FT	36 1/2	10 1/4	16
4 FT	48 1/2	8 1/4	32

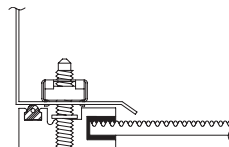
LENS FRAME DETAILS:



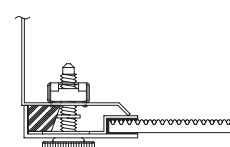
ALUMINUM
LENS FRAME DETAIL



STAINLESS STEEL
LENS FRAME DETAIL



SPLASH ZONE
LENS FRAME DETAIL

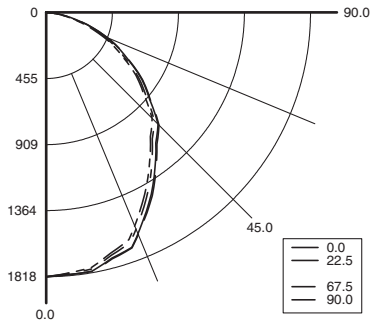


FOOD ZONE
LENS FRAME DETAIL



PHOTOMETRICS: For additional photometry, go to paramountlighting.com

Model S32324-R5, 4FT, Specular Reflector and Prismatic Acrylic Lens, 2 32W T8 Fluorescent Lamps, Lamp Lumen Rating = 3050



Coefficients of Utilization, Zonal Cavity Method

Floor Cavity Reflectance: 20%

RC	.8				.7				.5				.3				.1				0	
RW	.7	.5	.3	.1	.7	.5	.3	.1	.5	.3	.1	.5	.3	.1	.5	.3	.1	.5	.3	.1	0	
R 0	88	88	88	88	86	86	86	86	82	82	82	79	79	79	76	76	76	74				
C 1	81	78	75	72	79	76	73	71	73	71	69	70	68	67	67	66	65	64				
R 2	74	68	63	59	72	67	62	59	64	60	57	62	59	56	60	57	55	53				
3	68	60	54	50	66	59	54	49	57	52	48	55	51	47	53	50	47	45				
4	62	53	47	42	60	52	47	42	51	45	41	49	44	41	47	43	40	39				
5	57	48	41	37	56	47	41	36	45	40	36	44	39	36	43	39	35	34				
6	53	43	37	32	51	42	36	32	41	36	32	40	35	31	39	34	31	30				
7	49	39	33	28	48	39	33	28	37	32	28	36	31	28	35	31	28	26				
8	46	36	30	25	45	35	29	25	34	29	25	33	29	25	33	28	25	23				
9	43	33	27	23	42	32	27	23	32	26	23	31	26	23	30	26	22	21				
10	40	30	25	21	39	30	24	21	29	24	21	29	24	20	28	24	20	19				

Zonal Lumen Summary

Zone	Lumens	% Lamp	% Luminaire
0-30	1386	22.7	30.6
0-40	2195	36	48.5
0-60	3711	60.8	81.9
0-90	4528	74.2	100
90-120	0	0	0
90-130	0	0	0
90-150	0	0	0
90-180	0	0	0
0-180	4528	74.2	100

Total Luminaire Optical Efficiency = 74.2%
Spacing Criterion: 0° = 1.18, 90° = 1.14

1x TECHNISEAL® SURFACE TROFFER ORDERING INFORMATION:

SERIES	LAMP QTY	LAMP TYPE	LENS	OPT MATERIAL	OPTIONS	VOLTAGE
S3 Damp Location Cleanroom	1					120V-277V/60Hz STD 347V/60Hz
SS3 Splash Zone	2 Standard					
FS3 Food Zone	3					50Hz & Other Voltages Available
14T5 F14T5 (2FT)	0°					
17 F17T8 (2FT)	0°					
21T5 F21T5 (3FT)	0°					
25 F25T8 (3FT)	0°					
28T5 F28T5 (4FT)	0°					
32 F32T8 (4FT)	0°					
			2 .125 Clear Acrylic (No Pattern) 3 .125 White Acrylic 4 .140 Prismatic Acrylic (P12) (base) 6 .125 Clear Polycarbonate (No Pattern) 7 .125 White Polycarbonate 8 .156 Prismatic Polycarbonate (P12) 9 .187 Tempered Glass (P62)		EM2 Bodine BDL700 WET/IOTA I-48-DL WET or similar EM3 Bodine BDL500 WET/IOTA I-320-DL WET or similar EM4 Bodine BDL900 WET/IOTA I-40-DL WET or similar BALLASTS (SPECIFY VOLTAGE) D1 Lutron Dimming ECO-10 D2 Electronic Dimming D4 < 10% THD (Consult Factory) E2 2 Electronic Ballasts E3 3 Electronic Ballasts E9 Rapid Start Electronic Ballast FUSING F1 GLR/HLR Fusing (Fast) F2 GMF/HLR Fusing (Slow) LENSING H0 Special Lens (Specify) H2 .150 Extra Heavy Clear Acrylic H3 .150 Extra Heavy White Acrylic H5 .156 C73 Tempered Glass H6 .187 Clear Tempered Glass J0 Lamp Sleeves (Specify Color) J2 .060 Clear Acrylic Overlay J4 .020 White Acrylic Overlay (Lamp Side) J6 .080 Clear Polycarbonate Overlay J9 RFI Lens (Specify Pattern) K3 .187 KSH-12 Acri-Tuf Acrylic K6 External Prisms (N/A Splash/Food Zones) MOUNTING M0 Marine Mounting Straps M1 Pendant Mount (Pendants By Others) M2 Mounting Bracket Kit (Surface / Chain) MISC IP65 IP rated (-SS option required) P9 Special Paint Color (Provide Paint Code & Chip) R5 Specular Aluminum Reflector S1 Special Material (Consult Agent) T3 Tamper Resistant (Hex w/pin STD, Others Avail) W4 Inboard Outboard Wiring (Dual Switching) W5 Rear Wire Entry Y5 RFI Suppressors	
			LENSES AVAILABLE FOR FOOD ZONE 6 .125 Clear Polycarbonate (No Pattern) 7 .125 White Polycarbonate 8 .156 Prismatic Polycarbonate (P12)(base) 9 .187 Tempered Glass (P62)			
			*S2 Stainless Steel Housing *S3 Stainless Steel Exterior *S5 Stainless Steel Lens Frame Only * Note: If Stainless Steel is ordered, 304 SS Standard 316 SS and other materials available, consult agent.			

NSF Food Processing Note:

Food Zone (F prefix) luminaires come in DIRECT CONTACT with food. Splash Zone (S prefix) units may become soiled, but are outside the danger of recontamination.

Project Information:

Information subject to change without notice. Lamps supplied by others.

© 2010 Paramount Industries, Inc. P.O. Box 259 Crosswell, MI 48422