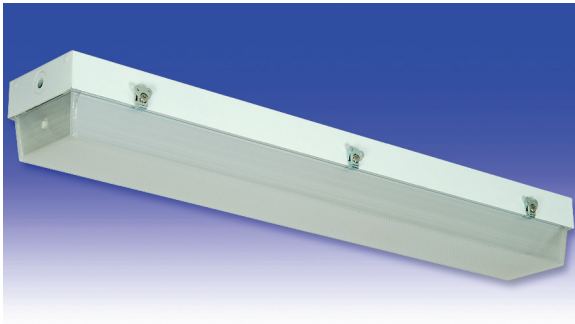


L4 Series

FLUORESCENT | SURFACE 



LUME

APPLICATIONS:

- UL/CUL Listed Wet Location
- Industrial & Commercial
- UL Listed Marine (Inside, Drip-Proof)
- Transit

BENEFITS:

- Luminaires adaptable to your specific needs

FEATURES:

- 50% DR high-impact acrylic lens
- Premium electronic ballast standard
- Available in stainless steel construction
- Every luminaire tested with lamps to assure customer satisfaction
- 5 year limited warranty
- Proudly made in **USA**

SPECIFICATIONS:

HOUSING:

Constructed of 20GA (.036) zinc coated steel for unmatched corrosion protection. Welded tapered, threaded hubs are provided on ends of the luminaire for a sealed wireway access.

REFLECTOR:

Fabricated of zinc coated steel, painted with a minimum reflectance of 88%.

GASKETING:

Extruded EPDM is used to seal the lens to the housing.

FINISH:

Painted surfaces are two mil white polyester enamel, special colors available.

LENS:

High-impact .125 extruded acrylic with 50% DR content for durability. Longitudinal prisms along the side combined with a bottom prismatic pattern control uplight and glare. Unique cam action latches secure the lens tight to the housing, with stainless steel safety wires to support the lens while servicing.

ELECTRICAL:

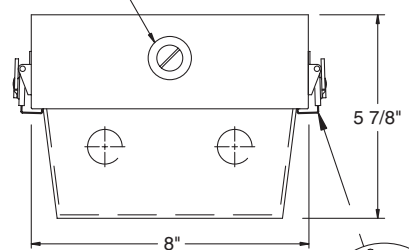
All ballasts and lampholders are UL Listed.

Marine: Utilizes a three gang terminal block for electrical connections.

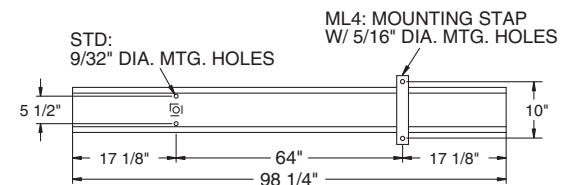
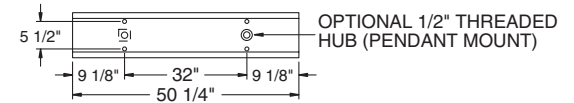
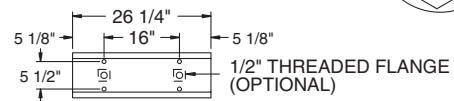
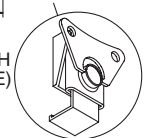
MOUNTING:

Surface, chain, pendant or custom detail available for covered ceiling installations. Surface mounted HO luminaires require a minimum 1 1/2" clearance (*Bracket kit supplied*). Chain or pendant options unavailable for marine application.

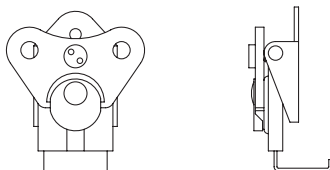
1/2" THREADED HUB (WIRE ENTRY)



CAM-LATCH (EACH SIDE)



TAMPER-PROOF LATCH ASSEMBLY



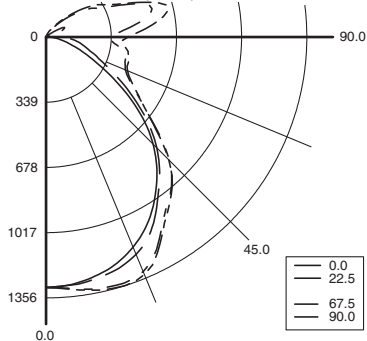


L4 Series



PHOTOMETRICS: For additional photometry, go to paramountlighting.com

Model L42325, 4FT, White Painted Interior and Light-controlled Acrylic Lens, 2 32W T8 Fluorescent Lamps, Lamp Lumen Rating = 3050



Coefficients of Utilization, Zonal Cavity Method

Floor Cavity Reflectance: 20%

RC	.8				.7				.5				.3				.1				0	
RW	.7	.5	.3	.1	.7	.5	.3	.1	.5	.3	.1	.5	.3	.1	.5	.3	.1	.5	.3	.1	0	
R 0	93	93	93	93	89	89	89	89	81	81	81	73	73	73	67	67	67	64				
C 1	83	79	75	72	79	76	72	69	69	66	64	63	60	58	57	55	54	51				
R 2	76	69	63	58	72	66	60	56	60	56	52	55	51	48	50	47	45	42				
3	69	60	54	48	65	58	52	47	53	48	44	48	44	41	44	41	38	35				
4	63	53	46	41	60	51	45	40	47	41	37	43	38	35	39	36	33	30				
5	58	48	40	35	55	46	39	34	42	36	32	39	34	30	35	31	28	26				
6	54	43	36	31	51	41	35	30	38	32	28	35	30	27	32	28	25	23				
7	50	39	32	27	47	37	31	26	34	29	25	32	27	23	29	25	22	20				
8	46	35	29	24	44	34	28	23	32	26	22	29	24	21	27	23	20	18				
9	43	32	26	21	41	31	25	21	29	24	20	27	22	19	25	21	18	16				
10	40	30	23	19	38	29	23	19	27	22	18	25	20	17	23	19	16	15				

Zonal Lumen Summary

Zone	Lumens	% Lamp	% Luminaire
0-30	1063	17.4	21.3
0-40	1723	28.2	34.5
0-60	2913	47.8	58.4
0-90	3911	64.1	78.4
90-120	860	14.1	17.2
90-130	996	16.3	20
90-150	1072	17.6	21.5
90-180	1077	17.7	21.6
0-180	4988	81.8	100

Total Luminaire Optical Efficiency = 81.8%
Spacing Criterion: 0° = 1.22, 90° = 1.33

LUME ORDERING INFORMATION:

SERIES	LAMP QTY	LAMP TYPE	LENS	OPT MATERIAL	OPTIONS	VOLTAGE
L4 Wet Location	1		2 .125 Clear Acrylic (No Pattern) 4&8 FT Only		EM2 Bodine BDL700 WET/IOTA I-48-DL WET or similar	120V-277V/60Hz STD
RL4 Marine Inside	2		3 .125 White Acrylic (4&8 FT Only)		EM3 Bodine BDL500 WET/IOTA I-320-DL WET or similar	347V/60Hz
ML4 Inside Drip-proof	T2 Tandem		5 Square Prismatic Light Control Acrylic (base)		EM4 Bodine BDL900 WET/IOTA I-40-DL WET or similar	50Hz & Other Voltages Available
	T4 2 Tandem				BALLASTS (SPECIFY VOLTAGE)	
					D1 Lutron Dimming ECO-10	
					D2 Electronic Dimming	
					D4 < 10% THD (Consult Factory)	
					D8 Low-Temp Electronic (N/A T12 RS & VHO)	
					E2 2 Electronic Ballasts	
					E9 Rapid Start Electronic Ballast	
					FUSING	
					F1 GLR/HLR Fusing (Fast)	
					F2 GMF/HLR Fusing (Slow)	
					LENSING	
					J0 Lamp Sleeves (Specify Color)	
					J8 Wire Guard	
					MOUNTING	
					M1 Pendant Mount (Pendants By Others)	
					M2 Mounting Bracket Kit (Surface / Chain)	
					M6 Angled Mounting Bracket (Consult Agent)	
					MISC	
					P9 Special Paint Color (Provide Paint Code & Chip)	
					S1 Special Material (Consult Agent)	
					T1 Stainless Steel Latches	
					T3 Tamper Resistant Latches (Please Specify)	
					W3 Remote Ballast Box	
					Y6 Flex-Loc® Lamp Holder (Med Bi-Pin Only: T8, T12)	
					Add hyphens between options	

***S3** Stainless Steel Exterior
 * Note:
 If Stainless Steel is ordered,
 304 SS Standard
 316 SS and other materials
 available, consult agent.

TANDEM LAMPS
Tandem lamps are tandem wired

28T5 F28T5 (8FT)	0°
32 F32T8 (8FT)	0°

Project Information:

Information subject to change without notice. Lamps supplied by others.

© 2010 Paramount Industries, Inc. P.O. Box 259 Crosswell, MI 48422