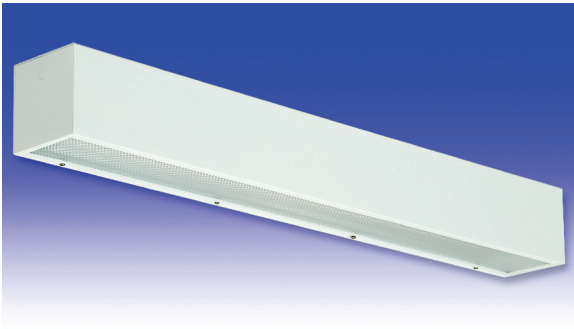




# K1 Series

FLUORESCENT | SURFACE **S**



### 6 x 6 LITE

#### APPLICATIONS:

- UL/CUL Listed Damp Location
- Industrial & Commercial

#### BENEFITS:

- Luminaires adaptable to your specific needs

#### FEATURES:

- Optional asymmetrical light distribution
- Premium electronic ballast standard
- Available in stainless steel construction
- Every luminaire tested with lamps to assure customer satisfaction
- 5 year limited warranty
- Proudly made in **USA**

## SPECIFICATIONS:

### HOUSING:

Constructed of nominal 18GA (.048) zinc coated steel for unmatched corrosion protection. Knockouts on the ends and top of the luminaire provide wireway access. All seams are sealed with a long life acrylic sealant.

### REFLECTOR:

Fabricated of zinc coated steel, painted with a minimum reflectance of 88%.

### LENS FRAME:

20GA (.036) zinc coated steel with captive stainless steel screws used to hold the lens frame tight to the housing. The frame is supported by a continuous steelhinge for ease of servicing.

### GASKETING:

EPDM is used to seal the lens into the frame and the frame to the housing.

### FINISH:

Painted surfaces are two mil of white polyester enamel, special colors are available.

### LENS:

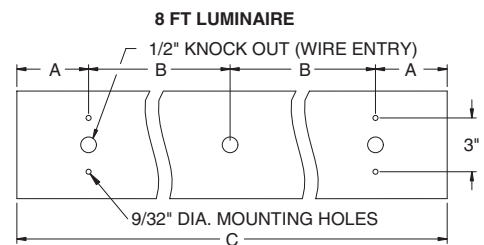
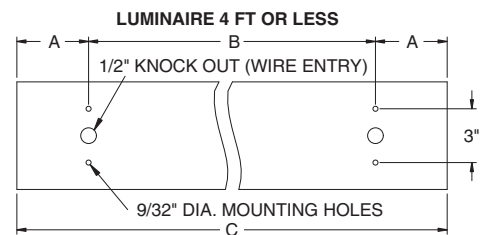
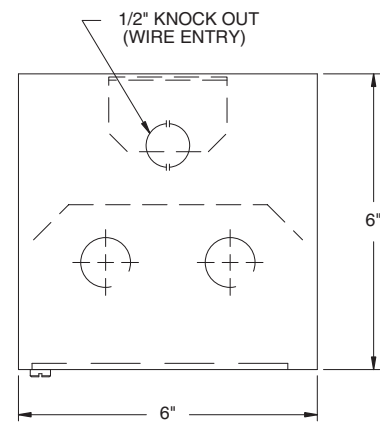
.140 extruded prismatic acrylic with 50% DR content for durability, smooth side out.

### ELECTRICAL:

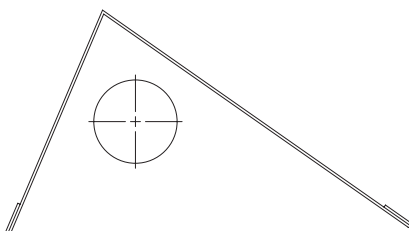
All ballasts and lampholders are UL Listed.

### MOUNTING:

Surface, pendant or custom detail available for covered ceiling installations.



ASYMMETRIC REFLECTOR, OPTION -R4  
(1 LAMP ONLY)



LENGTH	DIMENSIONS IN INCHES		
	A	B	C
10.5"	2 13/16	4 7/8	10 1/2
13"	3 1/2	6	13
16"	3	10	16
19"	3 1/2	12	19
2 FT HO	4	16	24
2 FT RS	4 1/8	16	24 1/4
4 FT HO	8	32	48
4 FT RS	8 1/8	32	48 1/4
8 FT HO	16	32	96
8 FT TDM RS	16 5/32	32	96 5/16

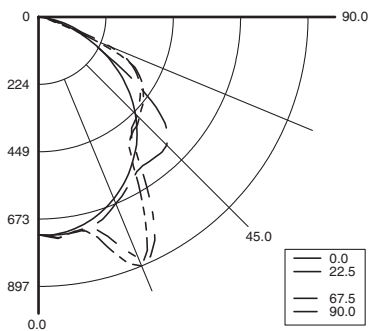


# K1 Series



PHOTOMETRICS: For additional photometry, go to [paramountlighting.com](http://paramountlighting.com)

Model K11326-R5, 4FT, Specular Reflector and Clear Polycarbonate Lens, 1 32W T8 Fluorescent Lamp, Lamp Lumen Rating = 3050



### Coefficients of Utilization, Zonal Cavity Method

Floor Cavity Reflectance: 20%

RC	.8			.7			.5			.3			.1			0
RW	.7	.5	.3	.7	.5	.3	.5	.3	.1	.5	.3	.1	.5	.3	.1	0
R 0	81	81	81	79	79	79	75	75	75	72	72	72	69	69	69	68
C 1	74	71	69	73	70	68	67	65	63	64	63	61	62	61	60	58
R 2	68	63	58	66	61	58	59	56	53	57	54	52	55	53	51	49
3	62	55	50	60	54	49	52	48	45	50	47	44	49	46	43	42
4	57	49	43	55	48	43	46	42	38	45	41	38	43	40	37	36
5	52	44	38	51	43	38	42	37	33	40	36	33	39	35	32	31
6	48	39	34	47	39	33	38	33	29	36	32	29	35	31	28	27
7	45	36	30	44	35	30	34	29	26	33	29	25	32	28	25	24
8	42	33	27	41	32	27	31	26	23	30	26	23	30	26	22	21
9	39	30	24	38	29	24	29	24	21	28	24	20	27	23	20	19
10	36	27	22	35	27	22	26	22	19	26	21	18	25	21	18	17

### Zonal Lumen Summary

Zone	Lumens	% Lamp	% Luminaire
0-30	624	20.5	30.1
0-40	1010	33.1	48.7
0-60	1737	57	83.7
0-90	2075	68	100
90-120	0	0	0
90-130	0	0	0
90-150	0	0	0
90-180	0	0	0
0-180	2075	68	100

Total Luminaire Optical Efficiency = 68.0%  
Spacing Criterion: 0° = 1.23, 90° = 1.25

## 6 x 6 LITE ORDERING INFORMATION:

K1 SERIES		LAMP QTY	LAMP TYPE	LENS	OPTIONAL MATERIAL	OPTIONS	VOLTAGE
K1		Damp Location	1 2 T2 Tandem T4 2 Tandem	2 .125 Clear Acrylic (No Pattern) 3 .125 White Acrylic 4 .140 Prismatic Acrylic (P12) (base) 6 .125 Clear Polycarbonate (No Pattern) 7 .125 White Polycarbonate 8 .156 Prismatic Polycarbonate (P12) 9 .187 Tempered Glass (P62)		<b>EMERGENCY (SPECIFY VOLTAGE)</b> <b>EM2</b> Bodine BDL700 WET/IOTA I-48-DL WET or similar <b>EM3</b> Bodine BDL500 WET/IOTA I-320-DL WET or similar <b>EM4</b> Bodine BDL900 WET/IOTA I-40-DL WET or similar <b>BALLASTS (SPECIFY VOLTAGE)</b> <b>D1</b> Lutron Dimming ECO-10 <b>D2</b> Electronic Dimming <b>D4</b> < 10% THD (Consult Factory) <b>E0</b> Low-Temp Electronic (N/A T12 RS & VHO) <b>E2</b> 2 Electronic Ballasts <b>E9</b> Rapid Start Electronic Ballast <b>FUSING</b> <b>F1</b> GLR/HLR Fusing (Fast) <b>F2</b> GMF/HLR Fusing (Slow) <b>LENSING</b> <b>H2</b> .150 Extra Heavy Clear Acrylic <b>H3</b> .150 Extra Heavy White Acrylic <b>H5</b> .156 C73 Tempered Glass <b>H6</b> .187 Clear Tempered Glass <b>K6</b> External Prisms <b>MISC</b> <b>M1</b> Pendant Mount (Pendants By Others) <b>P9</b> Special Paint Color (Provide Paint Code & Chip) <b>R4</b> Asymmetric Reflector (1 Lamp Only) <b>R5</b> Specular Aluminum Reflector <b>S1</b> Special Material (Consult Agent) <b>T3</b> Tamper Resistant (Hex w/pin STD, Others Avail)	120V-277V/60Hz STD 347V/60Hz 50Hz & Other Voltages Available
<b>18QD</b> 18W G24Q 4 Pin (10.5") 0° <b>26QD</b> 26W G24Q 4 Pin (10.5") 0° <b>18BX</b> F18T5TT (13") 0° <b>27BX</b> F24-F27T5TT (16") 0° <b>39BX</b> F36-F39T5TT (19") 0° <b>40BX</b> F40T5TT (2FT) 0° <b>50BX</b> F50T5TT (2FT) 0° <b>14T5</b> F14T5 (2FT) 0° <b>17</b> F17T8 (2FT) 0° <b>24T5H</b> F24T5/HO (2FT) 0° <b>28T5</b> F28T5 (4FT) 0° <b>32</b> F32T8 (4FT) 0° <b>48H</b> F48T12/HO (4FT) -20° <b>48T8H</b> F48T8/HO (4FT) -20° <b>54T5H</b> F54T5/HO (4FT) 0° <b>96H</b> F96T12/HO (8FT) -20° <b>96T8</b> F96T8 (8FT) (59W) 50° <b>96T8H</b> F96T8/HO (8FT) <b>2L Only</b> -20°		<b>TANDEM LAMPS</b> Tandem lamps are tandem wired <b>40BX</b> F40T5TT (4FT) 0° <b>32</b> F32T8 (8FT) 0°		<b>*S3</b> Stainless Steel Exterior <b>* Note:</b> If Stainless Steel is ordered, 304 SS Standard 316 SS and other materials available, consult agent.		Add hyphens between options	

Other Wattages and Lengths Available, Consult Factory.

**Project Information:**

Information subject to change without notice. Lamps supplied by others.

© 2010 Paramount Industries, Inc. P.O. Box 259 Crosswell, MI 48422