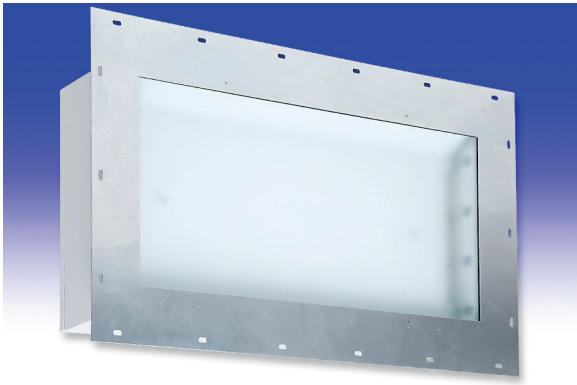




HB8 2x RA Series

FLUORESCENT | FLANGE 



2x BOOTH LITE APPLICATIONS:

- UL/CUL Listed Wet Location
- UL/CUL Hazardous Location (Class I, Division 2; Groups A, B, C & D Class II, Division 2; Groups F & G)

BENEFITS:

- Rear access
- Luminaires adaptable to your specific needs

FEATURES:

- Premium electronic ballast standard where available
- Available in Stainless Steel construction
- Every luminaire tested with lamps to assure customer satisfaction
- 5 year limited warranty
- Proudly made in **USA**

SPECIFICATIONS:

HOUSING:

Constructed of nominal 18GA (.048) zinc coated steel for unmatched corrosion protection. One welded, tapered, threaded hub on the side provides a sealed wireway access. All seams are sealed with a long life acrylic sealant.

REFLECTOR:

Fabricated of zinc coated steel, painted with a minimum reflectance of 88%.

REAR ACCESS DOOR:

Nominal 18GA (.048) zinc coated steel with a full length piano hinge on one side. Door is secured with plated captive screws. EPDM extruded gasket seals the door to the housing.

FINISH:

Painted surfaces are two mil of white polyester enamel.

LENS:

.187 Pattern 62 tempered glass.

ELECTRICAL:

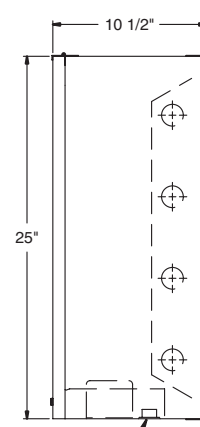
All ballasts and lampholders are UL Listed.

MOUNTING:

Supplied with 14GA (.075) stainless steel flange. 304 SS standard, 316 SS and other materials also available. Custom size flanges available. Contact Sales Representative for information.

TEMPERATURE CODE:

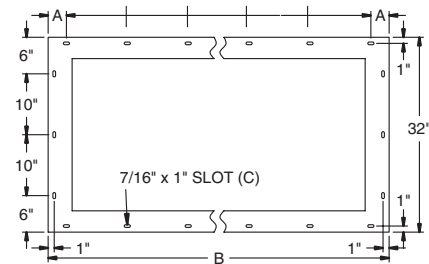
Class I, Div. 2 - T3 (200°C); Class II, Div. 2 - T6 (85°C).



1/2" THREADED HUB (WIRE ENTRY)

MOUNTING FLANGE DETAIL

4FT: 5 SPACES @ 10" O.C.
8FT: 10 SPACES @ 10" O.C.



NOMINAL HOUSING DIMENSIONS IN INCHES		
LUMINAIRE	HOUSING	PANEL CUT-OUT SIZE
2 FT x 4 FT	25 x 48 1/8	25 1/2 x 48 5/8
2 FT x 8 FT	25 x 96 1/8	25 1/2 x 96 5/8

MOUNTING FLANGE DIMENSIONS IN INCHES			
LUMINAIRE	A	B	C (QTY)
2 FT x 4 FT	3	56	18
2 FT x 8 FT	2	104	28



Hazardous Location:

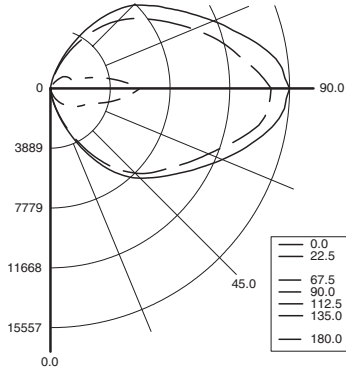


HB8 2x RA Series



PHOTOMETRICS: For additional photometry, go to paramountlighting.com

Model HB8696V9, 8FT, Specular Reflector and Tempered Glass Lens, 6 215W T12/VHO Fluorescent Lamps, Lamp Lumen Rating = 14500



Coefficients of Utilization, Zonal Cavity Method

Floor Cavity Reflectance: 20%

RC	.8				.7				.5			.3			.1			0
RW	.7	.5	.3	.1	.7	.5	.3	.1	.5	.3	.1	.5	.3	.1	.5	.3	.1	0
R 0	43	43	43	43	39	39	39	39	34	34	34	28	28	28	23	23	23	21
C 1	36	34	31	29	33	31	29	26	26	24	22	21	20	18	17	16	15	13
R 2	32	28	24	21	29	25	22	19	21	18	16	17	15	13	13	11	10	8
3	29	24	20	17	26	21	18	15	18	15	13	14	12	10	11	9	8	6
4	26	20	16	13	23	19	15	12	15	12	10	12	10	8	9	7	6	4
5	23	17	14	11	21	16	12	10	13	10	8	10	8	6	8	6	5	3
6	21	15	12	9	19	14	11	8	12	9	7	9	7	5	7	5	4	2
7	19	14	10	7	18	13	9	7	10	7	5	8	6	4	6	4	3	2
8	18	12	9	6	16	11	8	6	9	6	5	7	5	3	5	4	2	1
9	17	11	8	5	15	10	7	5	8	6	4	7	4	3	5	3	2	1
10	15	10	7	5	14	9	6	4	8	5	3	6	4	2	5	3	2	1

Zonal Lumen Summary

Zone	Lumens	% Lamp	% Luminaire
0-30	600	0.7	1.8
0-40	1689	1.9	4.9
0-60	5950	6.8	17.4
0-90	18437	21.2	53.7
90-120	16748	19.3	48.8
90-130	12486	14.4	36.4
90-150	15868	18.2	46.3
90-180	34305	39.4	100
0-180	4289	53	100

Total Luminaire Optical Efficiency = 39.4%

Spacing Criterion: 0° = , 90° =

2x BOOTH LITE—REAR ACCESS ORDERING INFORMATION:

HB8 SERIES	LAMP QTY	LAMP TYPE	9 LENS	OPTIONS	VOLTAGE
HB8 Hazardous	4 6	9 .187 Tempered Glass (P62)		EMERGENCY (SPECIFY VOLTAGE) *EM2 Bodine BDL700 WET/IOTA I-48-DL WET or similar *EM3 Bodine BDL500 WET/IOTA I-320-DL WET or similar *EM4 Bodine BDL900 WET/IOTA I-40-DL WET or similar EM8 Bodine BHD65U HAZ. LOC.	120V-277V/60Hz STD 347V/60Hz 50Hz & Other Voltages Available
32 F32T8 (4FT)	0°			BALLASTS (SPECIFY VOLTAGE) D4 < 10% THD (Consult Factory) E0 Low temp Electronic (N/A T12 RS & VHO) E2 2 Electronic Ballasts E3 3 Electronic Ballasts E9 Rapid Start Electronic Ballast	
48H F48T12/HO (4FT)	-20°			FUSING F1 GLR/HLR Fusing (Fast) F2 GMF/HLR Fusing (Slow)	
48V F48T12/VHO Mag. (4FT)	-20°			LENSING H5 .156 C73 Tempered Glass H6 .187 Clear Tempered Glass	
48T8H F48T8/HO (4FT)	-20°			MISC R5 Specular Aluminum Reflector S1 Special Material (Consult Agent)	
96H F96T12/HO M(8FT)	-20°				
96T8 F96T8 (8FT) (59W)	50°				
96T8H F96T8/HO (8FT)	-20°				
96V F96T12/VHO Mag. (8FT)	-20°				

* Must be remoted to a NON-HAZARDOUS location
Add hyphens between options

Project Information:

Information subject to change without notice. Lamps supplied by others.

© 2010 Paramount Industries, Inc. P.O. Box 259 Crosswell, MI 48422