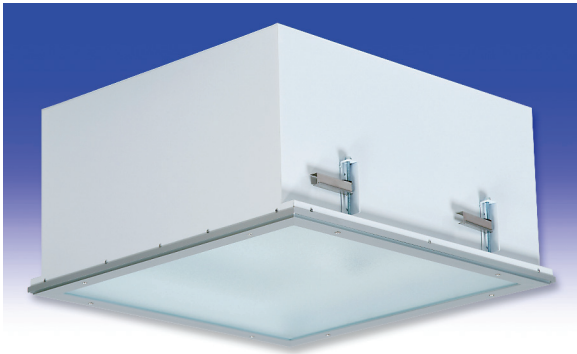




H8 Series

HID | FLANGE 



HID RACQUETBALL LITE APPLICATIONS:

- UL/CUL Listed Wet Location
- Industrial & Commercial

BENEFITS:

- Luminaires adaptable to your specific needs

FEATURES:

- Every luminaire tested with lamps to assure customer satisfaction
- 5 year limited warranty
- Proudly made in **USA**

SPECIFICATIONS:

HOUSING:

Constructed of nominal 20GA (.036) zinc coated steel for unmatched corrosion protection. One welded, tapered, threaded flange on the top provides a sealed wireway access. All seams are sealed with a long life acrylic sealant.

REFLECTOR:

Fabricated of diffuse aluminum.

LENS FRAME:

Exclusively designed, heavy duty, extruded, anodized aluminum with stainless steel captive screws used to hold the lens frame tight to the housing. The frame is hinged for support while servicing.

GASKETING:

Silicone sealant is used to seal the lens into the frame; with our exclusive, mechanically held, extruded, silicone gasket used to seal the frame to the housing.

FINISH:

Painted surfaces are two mil of white polyester enamel.

LENS:

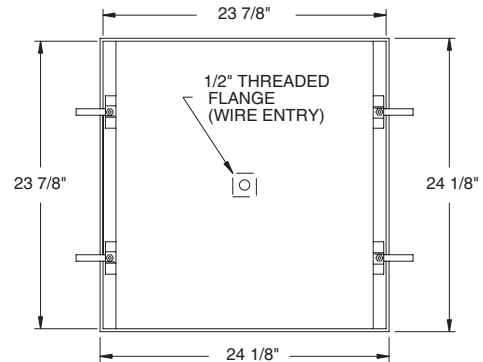
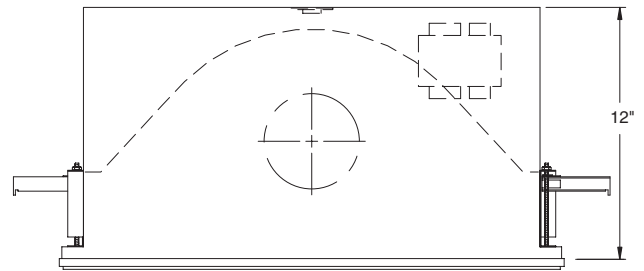
.187 pattern 62 tempered glass.

ELECTRICAL:

Core and coil ballast standard. Porcelain mogul base lampholder has a nickel plated screw shell.

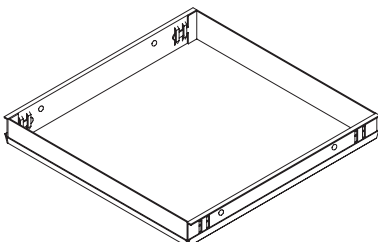
MOUNTING:

Flange, includes special plaster frame or custom detail available.



CUT-OUT DIMENSIONS: 24 1/4" x 24 1/4"

WET PLASTER FRAME



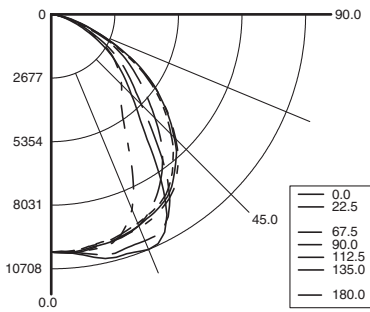


H8 Series



PHOTOMETRICS: For additional photometry, go to paramountlighting.com

Model H8400M9, Semi-diffuse Reflector and Tempered Glass Lens, 400W BT-37 MH Lamp, Lamp Lumen Rating = 40000



Coefficients of Utilization, Zonal Cavity Method

Floor Cavity Reflectance: 20%

RC	.8				.7				.5			.3			.1			0
RW	.7	.5	.3	.1	.7	.5	.3	.1	.5	.3	.1	.5	.3	.1	.5	.3	.1	0
R 0	76	76	76	76	74	74	74	74	70	70	70	67	67	67	65	65	65	63
C 1	70	67	65	63	68	66	64	62	63	61	60	61	59	58	58	57	56	55
R 2	64	59	55	52	62	58	55	52	56	53	50	54	51	49	52	50	48	47
3	59	53	48	44	57	52	47	44	50	46	43	48	45	42	46	44	41	40
4	54	47	42	38	53	46	41	37	45	40	37	43	39	36	42	39	36	35
5	50	42	37	33	49	41	36	33	40	36	32	39	35	32	38	34	31	30
6	46	38	33	29	45	37	32	29	36	32	28	35	31	28	34	31	28	27
7	43	35	29	25	42	34	29	25	33	28	25	32	28	25	31	28	25	24
8	40	32	26	23	39	31	26	23	30	26	23	29	25	22	29	25	22	21
9	37	29	24	20	36	29	24	20	28	23	20	27	23	20	27	23	20	19
10	35	27	22	19	34	26	22	19	26	21	18	25	21	18	25	21	18	17

Zonal Lumen Summary

Zone	Lumens	% Lamp	% Luminaire
0-30	8168	20.4	32
0-40	13228	33.1	51.9
0-60	21942	54.9	86
0-90	25502	63.8	100
90-120	0	0	0
90-130	0	0	0
90-150	0	0	0
90-180	0	0	0
0-180	25502	63.8	100

Total Luminaire Optical Efficiency = 63.8%
Spacing Criterion: 0° = 1.30, 90° = 1.35

HID RACQUETBALL LITE ORDERING INFORMATION:

H8 SERIES	LAMP WATTS	LAMP TYPE	9 LENS	OPTIONS	VOLTAGE
H8 Wet Location	150 175 MH only 200 MH only 250 320 MH only 350 MH only 400	M MH Mogul Base S HPS Mogul Base	9 .187 Tempered Glass (P62)	FUSING & ELECTRICAL F2 GMF/HLR Fusing (Slow) LENSING H5 .156 C73 Tempered Glass H6 .187 Clear Tempered Glass J2 .060 Clear Acrylic Overlay J6 .080 Clear Polycarbonate Overlay MOUNTING M8 Mounting Yoke MISC P9 Special Paint Color (Provide Paint Code & Chip) T3 Tamper Resistant (Hex w/pin STD, Others Avail) Y3 Quartz Restrike	120V/60Hz STD 208V/60Hz 240V/60Hz 277V/60Hz 347V/60Hz 480V/60Hz 50Hz Available

Add hyphens between options

Project Information:

Information subject to change without notice. Lamps supplied by others.

© 2010 Paramount Industries, Inc. P.O. Box 259 Crosswell, MI 48422