



# G7 Series

FLUORESCENT | GRID



### 2x SURGICAL TECHNISEAL®

#### APPLICATIONS:

- UL/CUL Listed Wet Location
- Cleanroom (Classes 100-100,000; ISO Classes 5-9)

#### BENEFITS:

- Designed specifically for supplementary Surgical Suite Illumination
- Luminaires adaptable to your specific needs

#### FEATURES:

- Premium electronic ballast standard
- Available in stainless steel construction
- Guardcraft® antimicrobial coating available
- Every luminaire tested with lamps to assure customer satisfaction
- 5 year limited warranty
- Proudly made in **USA**

## SPECIFICATIONS:

### HOUSING:

Constructed of nominal 20GA (.036) zinc coated steel for unmatched corrosion protection. Two welded, tapered, threaded flanges on the top provide a sealed wireway access. All seams are sealed with a long life acrylic sealant.

### REFLECTOR:

Fabricated of zinc coated steel, painted with a minimum reflectance of 88%.

### LENS FRAME:

Exclusively designed, heavy duty, extruded, anodized aluminum with stainless steel captive screws used to hold the lens frame tight to the housing. The frame is hinged for support while servicing.

### GASKETING:

An extruded, ribbed vinyl gasket seals the lens into the frame; with our exclusive, mechanically held, extruded, silicone gasket used to seal the frame to the housing.

### FINISH:

Painted surfaces are two mil white polyester enamel, special colors available.

ALSO AVAILABLE: Paramount's special Guardcraft® antimicrobial coating with nano silver technology to inhibit growth of bacteria on the coating surface. Silver nano particles approximately 1000 times smaller in diameter than a human hair are evenly dispersed throughout the coating to provide long term protection.

### LENS:

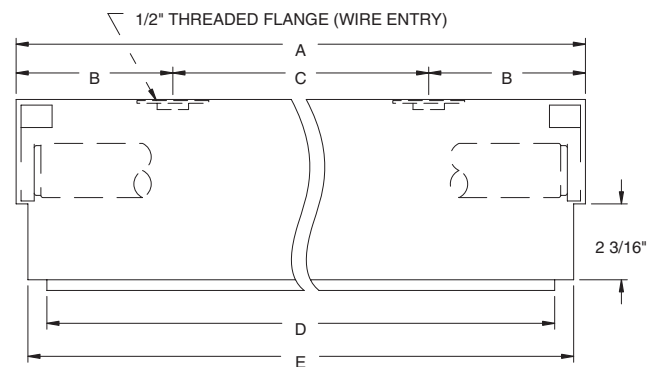
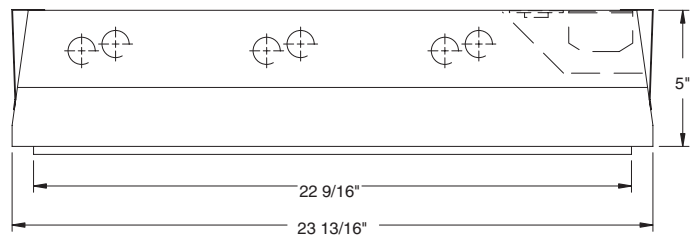
.150 extruded acrylic. Asymmetric/Symmetric distribution consisting of male cone prisms and linear elevating and depressing prisms, with radio frequency interference shielding. Complies with applicable government RFI specifications MIL-STD-461A, MIL-STD-462, MIL-STD-463

### ELECTRICAL:

All ballasts and lampholders are UL Listed.

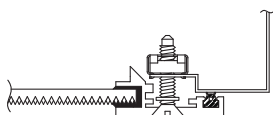
### MOUNTING:

Grid or custom detail available.

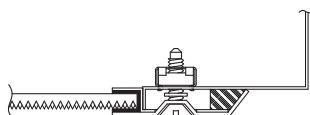


LENGTH	DIMENSIONS IN INCHES				
	A	B	C	D	E
2 FT	23 29/32	1 9/32	21 3/8	22 9/16	23 11/16
4 FT	47 29/32	4 31/32	38	46 3/8	47 11/16

## LENS FRAME DETAILS:



ALUMINUM LENS FRAME DETAIL



STAINLESS STEEL LENS FRAME DETAIL

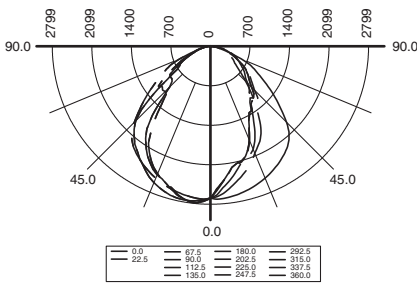


# G7 Series



PHOTOMETRICS: For additional photometry, go to [paramountlighting.com](http://paramountlighting.com)

Model G73321, 4FT, White Interior and Light-controlled Acrylic Lens, 3 32W T8 Fluorescent Lamps, Lamp Lumen Rating = 3050



## Coefficients of Utilization, Zonal Cavity Method

Floor Cavity Reflectance: 20%

RC	.8				.7				.5				.3				.1				0											
RW	.7	.5	.3	.1	.7	.5	.3	.1	.5	.3	.1	.5	.3	.1	.5	.3	.1	.5	.3	.1	.5	.3	.1	.5	.3	.1	.5	.3	.1	.5	.3	.1
R 0	72	72	72	72	70	70	70	70	67	67	67	64	64	64	61	61	61	60	60	60	60	60	60	60	60	60	60	60	60	60	60	
C 1	66	64	61	59	65	62	60	58	60	58	57	58	56	55	55	54	53	52	52	52	52	52	52	52	52	52	52	52	52	52	52	
R 2	61	56	53	50	59	55	52	49	53	50	48	51	49	47	49	47	46	44	44	44	44	44	44	44	44	44	44	44	44	44	44	
3	56	50	46	42	55	49	45	42	47	44	41	46	43	40	44	42	40	38	38	38	38	38	38	38	38	38	38	38	38	38	38	
4	52	45	40	36	50	44	40	36	43	39	36	41	38	35	40	37	35	33	33	33	33	33	33	33	33	33	33	33	33	33	33	33
5	48	40	35	32	47	40	35	32	39	34	31	37	34	31	36	33	31	29	29	29	29	29	29	29	29	29	29	29	29	29	29	29
6	44	37	32	28	43	36	31	28	35	31	28	34	30	27	33	30	27	26	26	26	26	26	26	26	26	26	26	26	26	26	26	26
7	41	33	28	25	40	33	28	25	32	28	25	31	27	25	30	27	24	23	23	23	23	23	23	23	23	23	23	23	23	23	23	23
8	38	31	26	22	38	30	26	22	30	25	22	29	25	22	28	25	22	21	21	21	21	21	21	21	21	21	21	21	21	21	21	21
9	36	28	24	20	35	28	23	20	27	23	20	27	23	20	26	23	20	19	19	19	19	19	19	19	19	19	19	19	19	19	19	19
10	34	26	22	19	33	26	22	19	25	21	18	25	21	18	24	21	18	17	17	17	17	17	17	17	17	17	17	17	17	17	17	17

## Zonal Lumen Summary

Zone	Lumens	% Lamp	% Luminaire
0-30	1928	21.1	34.8
0-40	3008	32.9	54.3
0-60	4735	51.8	85.5
0-90	5539	60.5	100
90-120	0	0	0
90-130	0	0	0
90-150	0	0	0
90-180	0	0	0
0-180	5539	60.5	100

Total Luminaire Optical Efficiency = 60.5%  
Spacing Criterion: 0° = 1.15, 90° = 1.33

## 2x SURGICAL TECHNISEAL® GRID TROFFER ORDERING INFORMATION:

G7		LAMP QTY		LAMP TYPE		1		OPT MAT		GRID		OPTIONS		VOLTAGE	
SERIES						LENS									
G7	Wet Location Cleanroom	3	6			1	.150 Extruded Acrylic Asymmetric/Symmetric								
17	F17T8 (2FT)														120V-277V/60Hz STD
32	F32T8 (4FT)														347V/60Hz
															50Hz & Other Voltages Available

**EMERGENCY (SPECIFY VOLTAGE)**  
**EM5** Bodine B70A DRY/IOTA I-48 or similar  
**EM6** Bodine B50 DRY/IOTA I-320 or similar

**BALLASTS (SPECIFY VOLTAGE)**  
**D1** Lutron Dimming ECO-10  
**D2** Electronic Dimming  
**D4** < 10% THD (Consult Factory)  
**E0** Low Temp Electronic (N/A T12 RS & VH0)  
**E9** Rapid Start Electronic Ballast

**FUSING**  
**F1** GLR/HLR Fusing (Fast)  
**F2** GMF/HLR Fusing (Slow)

**MISC**  
**J0** Lamp Sleeves (Specify Color)  
**P11** Guardcraft® Antimicrobial Coating  
**S1** Special Material (Consult Agent)  
**T3** Tamper Resistant (Hex w/pin STD, Others Avail)  
**V1** External Gasketing  
**V3** No Silicone Sealant Used  
**Y5** RFI Suppressors

Add hyphens between options

**G1** 1 1/2" T-Bar  
**G2** 2" T-Bar  
 1 Inch T-Bar Standard

**\*S2** Stainless Steel Housing  
**\*S3** Stainless Steel Exterior  
**\*S5** Stainless Steel Lens Frame Only

\* Note:  
 If Stainless Steel is ordered,  
 304 SS Standard  
 316 SS and other materials  
 available, consult agent.

### Note:

Due to the highly specialized lens, Paramount encourages the use of

- 1-3 Lamp Electronic Ballast for 3 Lamp Luminaires
- 2-3 Lamp Electronic Ballasts for 6 Lamp Luminaires

Information subject to change without notice. Lamps supplied by others.

© 2010 Paramount Industries, Inc. P.O. Box 259 Crosswell, MI 48422

### Project Information: