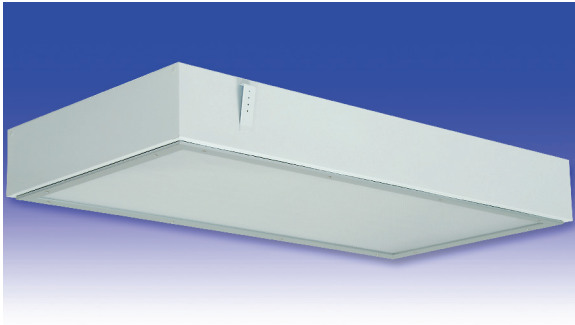


G2A Series

FLUORESCENT | GRID 



2x TECHNISEAL® APPLICATIONS:

- UL/CUL Listed Dry Location
- Industrial & Commercial
- Transit

BENEFITS:

- Luminaires adaptable to your specific needs

FEATURES:

- Premium electronic ballast standard
- Available in stainless steel construction
- Every luminaire tested with lamps to assure customer satisfaction
- 5 year limited warranty
- Proudly made in **USA**

SPECIFICATIONS:

HOUSING:

Constructed of nominal 20GA (.036) zinc coated steel for unmatched corrosion protection. Wireway access and convection louvers on top. All seams are sealed with a long life acrylic sealant.

REFLECTOR:

Fabricated of zinc coated steel, painted with a minimum reflectance of 88%.

LENS FRAME:

Exclusively designed, heavy duty, extruded, anodized aluminum with stainless steel captive screws used to hold the lens frame tight to the housing. The frame is hinged for support while servicing.

GASKETING:

An extruded, ribbed vinyl gasket seals the lens into the frame; with our exclusive, mechanically held, extruded, silicone gasket used to seal the frame to the housing.

FINISH:

Painted surfaces are two mil white polyester enamel, special colors available.

LENS:

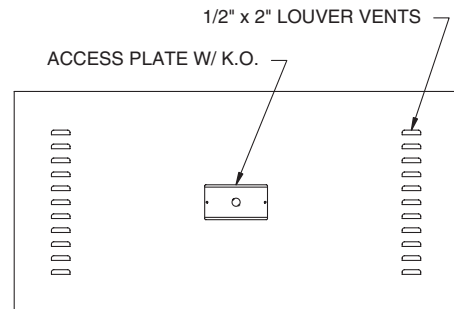
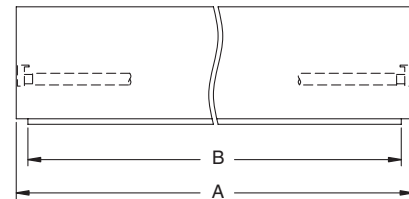
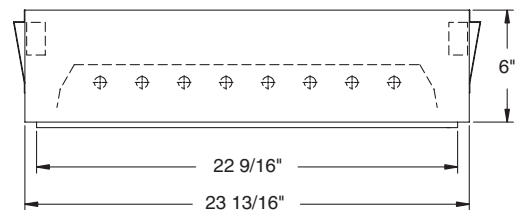
.140 extruded prismatic acrylic with 50% DR content for durability, smooth side out.

ELECTRICAL:

All ballasts and lampholders are UL Listed.

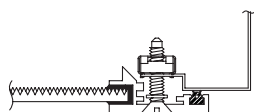
MOUNTING:

Grid or custom detail available.

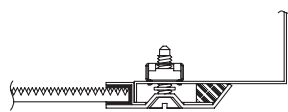


LENGTH	DIMENSIONS IN INCHES	
	A	B
2FT	23 11/16	22 9/16
4FT	47 11/16	46 1/2

LENS FRAME DETAILS:



ALUMINUM
LENS FRAME DETAIL



STAINLESS STEEL
LENS FRAME DETAIL

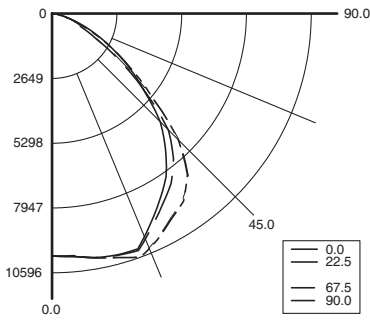


G2A Series



PHOTOMETRICS: For additional photometry, go to paramountlighting.com

Model G2A854T5H4/6, 4FT, Specular Reflector and Prismatic Acrylic Lens, 8 32W T5/HO Lamps, Lamp Lumen Rating = 5000



Coefficients of Utilization, Zonal Cavity Method

Floor Cavity Reflectance: 20%

RC	.8			.7			.5			.3			.1			0		
RW	.7	.5	.3	.1	.7	.5	.3	.1	.5	.3	.1	.5	.3	.1	0			
R 0	74	74	74	74	72	72	72	72	69	69	69	66	66	66	63	63	63	62
C 1	69	66	64	62	67	65	63	61	62	61	59	60	59	58	58	57	56	55
R 2	64	59	56	53	62	58	55	52	56	53	51	54	52	50	52	50	49	47
3	59	53	49	45	57	52	48	45	50	47	44	49	46	43	47	45	42	41
4	54	48	43	39	53	47	42	39	45	41	38	44	40	38	43	40	37	36
5	50	43	38	34	49	42	37	34	41	37	34	40	36	33	39	35	33	32
6	46	39	34	30	45	38	33	30	37	33	30	36	32	30	35	32	29	28
7	43	35	30	27	42	35	30	27	34	30	27	33	29	26	32	29	26	25
8	40	32	27	24	39	32	27	24	31	27	24	30	27	24	30	26	24	22
9	38	30	25	22	37	29	25	22	29	25	22	28	24	21	27	24	21	20
10	35	28	23	20	35	27	23	20	27	22	20	26	22	20	26	22	19	18

Zonal Lumen Summary

Zone	Lumens	% Lamp	% Luminaire
0-30	8490	21	34
0-40	13996	35	57
0-60	22426	56	91
0-90	24759	62	100
90-120	0	0	0
90-150	0	0	0
90-180	0	0	0
0-180	24759	62	100

Total Luminaire Optical Efficiency = 62%
Spacing Criterion: 0° = 1.29, 90° = 1.43

2x TECHNISEAL® GRID TROFFER ORDERING INFORMATION:

G2A SERIES	LAMP QTY	LAMP TYPE	LENS	OPT MAT	GRID	OPTIONS	VOLTAGE
G2A Dry Location	4 6 8		2 .125 Clear Acrylic (No Pattern) 3 .125 White Acrylic 4 .140 Prismatic Acrylic (P12) (base) 6 .125 Clear Polycarbonate (No Pattern) 7 .125 White Polycarbonate 8 .156 Prismatic Polycarbonate (P12) 9 .187 Tempered Glass (P62)			EMERGENCY (SPECIFY VOLTAGE) EM1 Bodine LP500 DRY/IOTA ISL28 DRY or similar EM7 Bodine LP550 DRY/IOTA ISL-54 DRY or similar BALLASTS (SPECIFY VOLTAGE) D1 Lutron Dimming ECO-10 D2 Electronic Dimming D4 < 10% THD (Consult Factory) E2 2 Electronic Ballasts E3 3 Electronic Ballasts E4 4 Electronic Ballasts FUSING F1 GLR/HLR Fusing (Fast) F2 GMF/HLR Fusing (Slow) LENSING H0 Special Lens (Specify) H2 .150 Extra Heavy Clear Acrylic H3 .150 Extra Heavy White Acrylic H5 .156 C73 Tempered Glass H6 .187 Clear Tempered Glass J2 .060 Clear Acrylic Overlay J4 .020 White Acrylic Overlay (Lamp Side) J6 .080 Clear Polycarbonate Overlay K3 .187 KSH-12 Acri-Tuf Acrylic K6 External Prisms MISC P9 Special Paint Color (Provide Paint Code & Chip) R5 Specular Aluminum Reflector S1 Special Material (Consult Agent) T3 Tamper Resistant (Hex w/pin STD, Others Avail) VI External Gasketing W4 Inboard Outboard Wiring (Dual Switching)	120V-277V/60Hz STD 347V/60Hz 50Hz & Other Voltages Available
14T5 F14T5 (2FT)	0°						
24T5H F24T5/HO (2FT)	0°						
28T5 F28T5 (4FT)	0°						
54T5H F54T5/HO (4FT)	0°						
			*S2 Stainless Steel Housing *S3 Stainless Steel Exterior *S5 Stainless Steel Lens Frame Only				
			* Note: If Stainless Steel is ordered, 304 SS Standard 316 SS and other materials available, consult agent.				
			G1 1 1/2" T-Bar G2 2" T-Bar				
			1 Inch T-Bar Standard				

Project Information:

Information subject to change without notice. Lamps supplied by others.

© 2010 Paramount Industries, Inc. P.O. Box 259 Crosswell, MI 48422