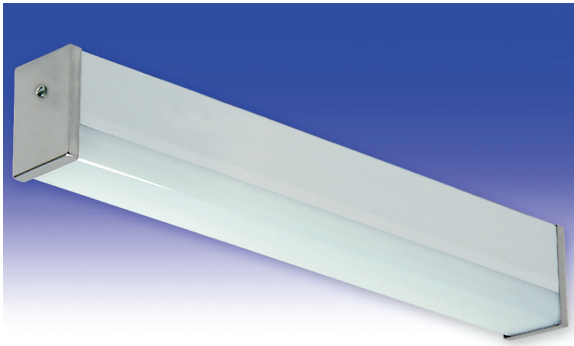




D1 Series

FLUORESCENT | SURFACE **S**



DESK LITE APPLICATIONS:

- UL/CUL Listed Damp Location
- Industrial & Commercial
- UL Listed Marine (Inside)

BENEFITS:

- Luminaires adaptable to your specific needs

FEATURES:

- Convenience receptacle (-X4) available
- Available in Stainless Steel construction
- Every luminaire tested with lamps to assure customer satisfaction
- 5 year limited warranty
- Proudly made in **USA**

SPECIFICATIONS:

HOUSING:

Constructed of 20GA (.036) zinc coated steel for unmatched corrosion protection. 1/2" knock-out on the back for wire entry.

REFLECTOR:

Fabricated of zinc coated steel, painted white with a minimum reflectance of 88%.

END CAPS:

Formed of 18GA (.048) stainless steel. A standard thumb screw secures each end cap to the luminaire housing. Two end caps secure lens.

GASKETING:

EPDM is used in the housing channels.

FINISH:

Painted surfaces are two mil white polyester enamel.

LENS:

One piece nominal .125 white acrylic.

SWITCH:

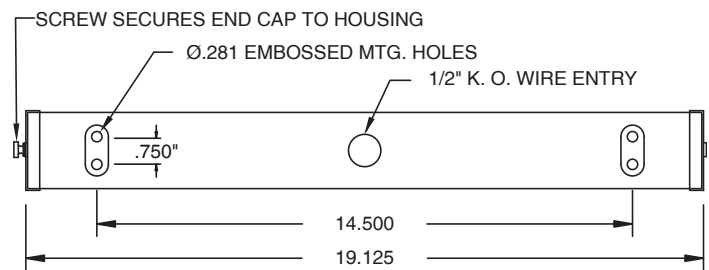
Rocker switch with positive on/off detent.

ELECTRICAL:

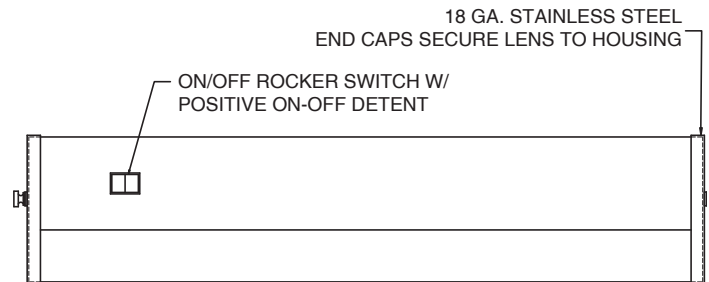
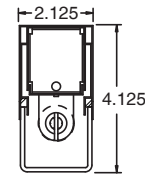
All ballasts and lampholders are UL Listed. Ballasts are magnetic trigger-start 120V. A three gang terminal block utilized for electrical connections.

MOUNTING:

Surface.



MOUNTING VIEW



SIDE VIEW

DESK LITE ORDERING INFORMATION:

SERIES	LAMP QTY	LAMP TYPE	LENS	OPT MATERIAL	OPTIONS	VOLTAGE
D1 Damp Location RD1 Marine Inside	1	15W T8	2 .125 Clear Acrylic (No Pattern) 3 .125 White Acrylic (base) 4 .125 Prismatic Acrylic (P4) 6 .125 Clear Polycarbonate (No Pattern) 7 .125 White Polycarbonate	*S2 Stainless Steel Outer Channel *S3 Stainless Steel Exterior *S4 Stainless Steel Complete * Note: If Stainless Steel is ordered, 304 SS Standard 316 SS and other materials available, consult agent.	FUSING F1 GLR/HLR Fusing (Fast) F2 GMF/HLR Fusing (Slow) MISC P9 Special Paint Color (Provide Paint Code & Chip) S1 Special Material (Consult Agent) T3 Tamper Resistant X9 Receptacle Add hyphens between options	120V/60Hz STD 277V/60Hz

Project Information:

Information subject to change without notice. Lamps supplied by others.

© 2010 Paramount Industries, Inc. P.O. Box 259 Croswell, MI 48422