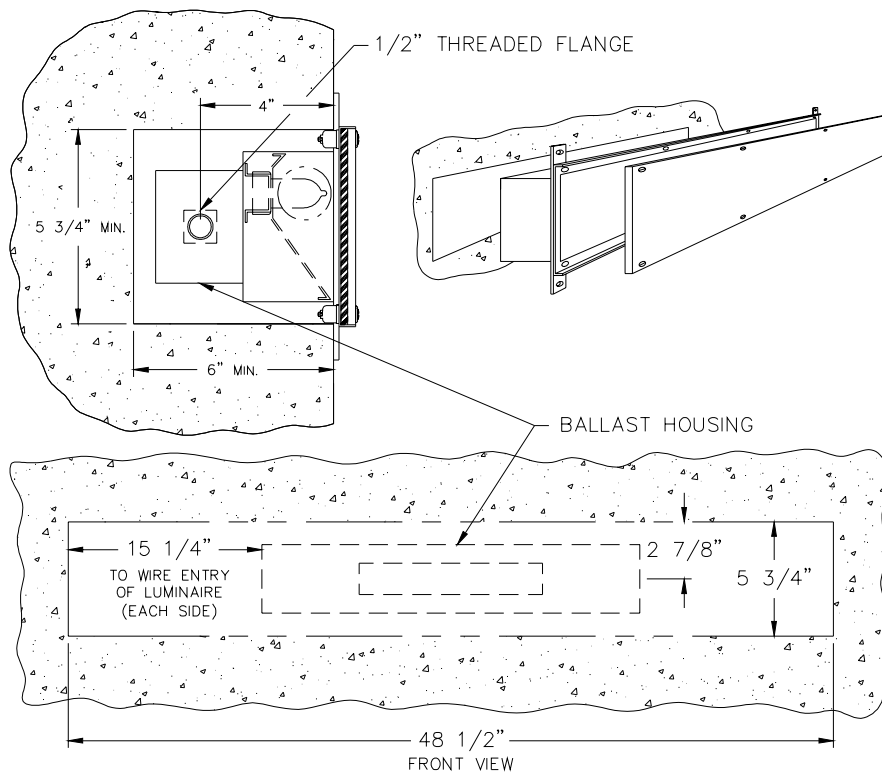


1. Remove lens by loosening all captive quarter-turn fasteners.
2. Remove reflector by turning the two (2) quarter-turn fasteners.
3. Mount the luminaire into the cavity and secure by utilizing the four (4) mounting holes.
4. Make all necessary wiring connections.
6. Replace reflector, lamp and secure lens.



Cleaning Instructions: Wipe luminaire with a soft cloth slightly dampened with warm, soapy water. On stainless steel units, tightly adhering deposits may be removed by using a stainless steel polishing powder. Never use steel wool or steel brushes on stainless steel. Always rub in the directions of the polish lines.

Note: All luminaires to be installed by a qualified electrician.
Mounting and electrical hardware not supplied by Paramount Industries unless otherwise noted.

REV 10/03