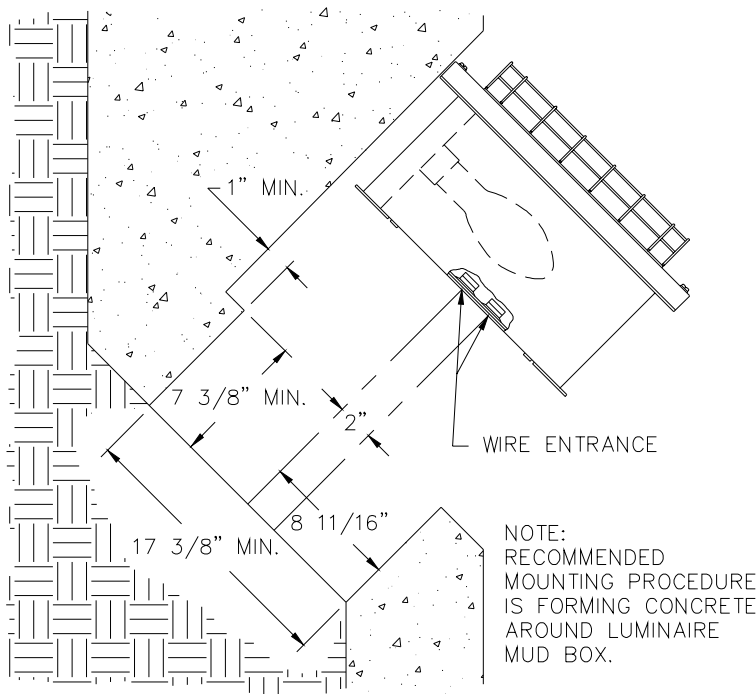


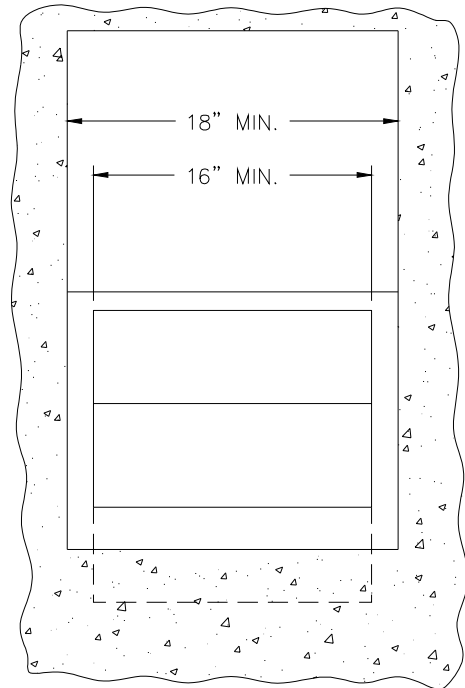


# SUGGESTED MOUNTING FOR ZP5 HID PIT LITE

1. Position mud box according to arrow marking inside.  
Make necessary wireway connections prior to pouring concrete.
2. Remove lens frame from housing by loosening captive screws.
3. Remove reflector by loosening and removing four (4) nuts.
4. Insert luminaire into mud box and secure with washers and nuts.
5. Make all necessary wiring connections.
6. Replace reflector, install lamp and lens frame.



END CROSS SECTION DETAIL



FRONT VIEW

**Cleaning Instructions:** Wipe luminaire with a soft cloth slightly dampened with warm, soapy water. On stainless steel units, tightly adhering deposits may be removed by using a stainless steel polishing powder. Never use steel wool or steel brushes on stainless steel. Always rub in the directions of the polish lines.

**Note:** All luminaires to be installed by a qualified electrician.  
Mounting and electrical hardware not supplied by Paramount Industries unless otherwise noted.