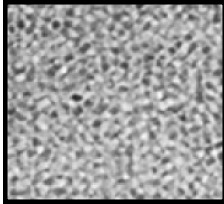


Glass Lens Specifications



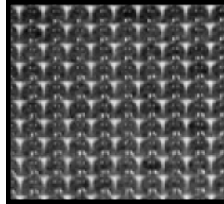
The lines of glass lens which Paramount offers in its luminaires give architects and designers a wide choice of creative possibilities for lighting panels. Prismatic, pebbled, ribbed or hammered patterns enable various degrees of light transmission and obscure the light source to prevent hot spots.

Glass lenses are noncombustible and most are tempered to resist thermal differences and withstand impacts three to five times greater than its annealed state. These lenses are also resistant to static electricity that collects dust and dirt.



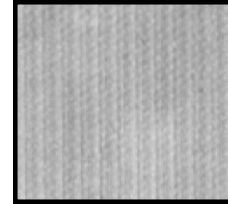
PATTERN 62

- Tempered Glass
- .125" Thickness
- .187" Thickness
- Irregular Pebble Pattern
- 88% Light Transmission (for .187" thickness)



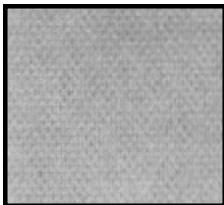
PATTERN 73

- Tempered Glass
- .156" Thickness
- Square Based Raised Circular Prisms 64 P.S.I.
- 88% Light Transmission



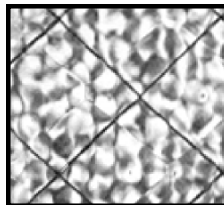
SKYTEX

- Tempered Glass
- .156" Thickness
- 1/8" Raised Rib Lines
- 84% Light Transmission



INDUSTREX

- Tempered Glass
- .156" Thickness
- .187" Thickness
- Fine Indented Pebble Pattern
- 88% Light Transmission (for .156" thickness)



WIRE GLASS

- Non-Tempered Glass
- .250" Thickness
- Hammered Finish
- 84% Light Transmission



CLEAR GLASS

- Tempered Glass
- .125" Thickness
- .156" Thickness
- .187" Thickness
- .25" Thickness
- Smooth Finish
- 89% Light Transmission (for .187" thickness)