



PARAMOUNT HELPS KEEP TAMPA ON THE MOVE



THE HART LINE, TAMPA'S TRANSIT AUTHORITY

Tampa, Florida has quite a tourist industry. Keeping them moving was a task that resulted in a stylish infrastructure addition.

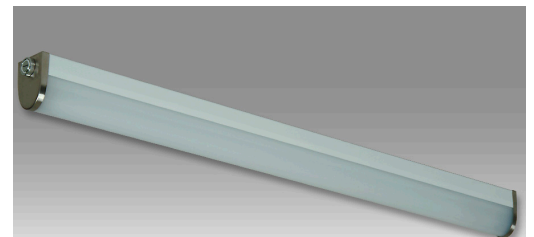


The HART Line, Tampa's transit authority, in conjunction with Tampa Electric Company, decided to build a new trolley line to extend from the docks on Tampa Bay to Ybor City.

The new line would run three miles and require platforms built along the way. These were designed by Abell Garcia & Assoc., Architects from Tampa.

To light the platform shelters, they contacted Ed Iwanowski of Western Florida Lighting for help to find luminaires that were both salt water-resistant and vandal resistant, and small enough to fit unobtrusively underneath the canopy structures.

Ed suggested Craft Lite® C2 series luminaires from Paramount Industries in Croswell, MI. First introduced in 1947, Craft Lite luminaires are still current with energy efficient electronic T8 and T5 fluorescent technology. The core ruggedness of these products has never flagged; their exceptional durability provides trouble-free service while creating a pleasant and secure atmosphere. Plus during daylight hours, the design of the C2 blends in well with the canopy surface. Most of the Craft Lite luminaires that were utilized featured T5/HO lamps. Ed commented that the lighting was well received. Five platforms were constructed in 2003.



Paramount's Craft Lite C2 Series, proved to be the perfect luminaire while still keeping with the need for a stylish look.